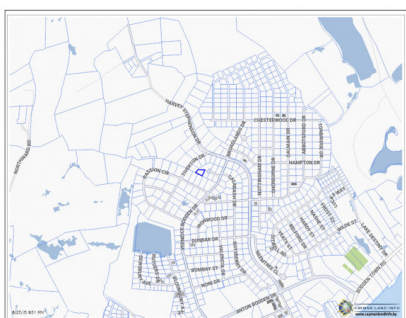
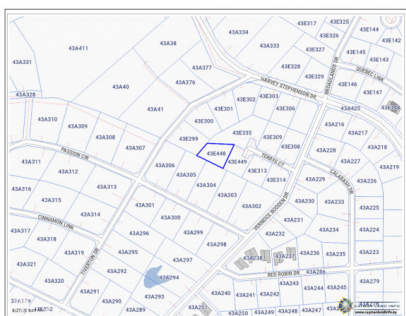
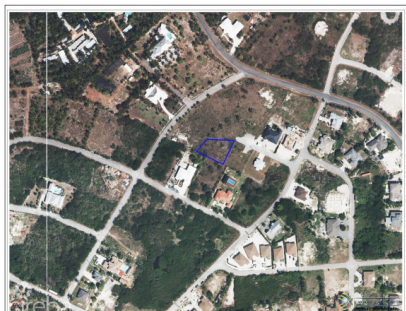


Residential Land Lookout Gardens

Bodden Town / Breakers, Grand Cayman

MLS# 419681

CI\$164,995





GEMMA HAYLOCK

gemma@williams2realestate.com



NEIL WILLIAMS

345 623-9999

neil@williams2realestate.com

Presenting Look Out Gardens House Lot, a hidden gem located off Verniece Bodden Drive in the heart of Bodden Town. Set on Terry Court, a peaceful dead-end road with just a handful of neighbors, this 0.26-acre parcel offers a sense of privacy and tranquility that is becoming increasingly rare in Cayman real estate. Whether you're planning to design and build your forever home or invest in the steady growth of the Cayman property market, this lot provides the perfect foundation. Quiet Location with Everyday Convenience While the setting is serene, convenience is just around the corner. This property is only 5 minutes to Countryside Shopping Centre, giving you access to groceries, dining, and everyday essentials. In just 10 minutes, you can be in George Town's waterfront and the Cayman Business District. Space to Design Your Vision At 0.26 acres, this well-sized lot gives you the flexibility to design a home that suits your lifestyle. Whether you imagine a modern Cayman-style residence with outdoor living spaces, a family home with a garden, or a property built with rental potential in mind, this site delivers the blank canvas to bring your vision to life. Secure Your Future Investment Today Opportunities like this are about more than just land — they're about creating the lifestyle you want. With its quiet neighborhood setting and proximity to both everyday essentials and the island's business heart, the Look Out Gardens House Lot is a rare chance to balance tranquility with convenience at an affordable price. Call today to secure your future investment! How do you want to live your life? ***Photos courtesy of caymanlandsinfo.ky

Essential Information

Type	Status	MLS#	Listing Type
Land	New	419681	Low Density Residential

Key Details

Width	Depth
124	101
Acreage	View
0.27	Garden View