



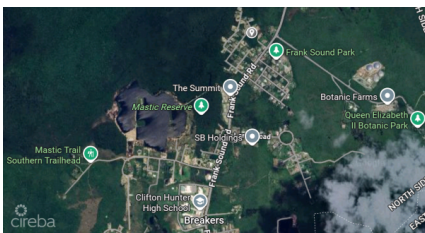
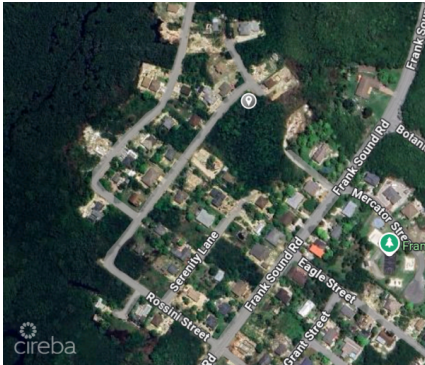
256 Crighton Building, Crewe Rd, PO BOX 1977,
Grand Cayman, KY1-1104, Cayman Islands
Phone: +1 (345) 949-7099
Fax: +1 (345) 949-6819
Email: info@cireba.com

Prime Corner Lot In Tranquil Frank Sound - 0.40 Acres

Midland East, Grand Cayman

MLS# 419728

CI\$175,000





MICHELE BRYAN
 michele@c21cayman.com

Build your dream home in one of Cayman’s most peaceful and serene communities. This generously sized 0.40-acre corner lot offers ample space to design a spacious family home or a smaller residence with room to grow. Situated in a low-density residential zone, the property provides privacy, serenity, and flexibility for thoughtful homebuilders seeking a slower-paced lifestyle without compromising convenience. Enjoy weekends exploring the nearby Mastic Trail, fishing the East End waters, or simply unwinding in the natural beauty of the Eastern Districts. With Clifton Hunter High School just minutes away, this location is ideal for families or anyone seeking a well-balanced island lifestyle. Large, level corner lot – ideal for a custom home Low-density zoning ensures peace and space Close to school, nature trails, and coastal activities Fantastic long-term value in a growing area Whether you’re ready to build now or planning for the future, this is a rare opportunity to secure a substantial lot in a beautiful and quiet Caymanian community.

Essential Information

Type Land	Status Current	MLS# 419728	Listing Type Low Density Residential
---------------------	--------------------------	-----------------------	--

Key Details

Width 140	Depth 120
Acreage 0.4000	View Garden View