



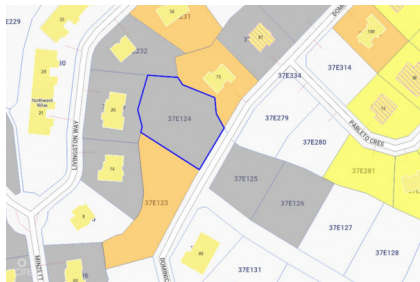
256 Crighton Building, Crewe Rd, PO BOX 1977,
Grand Cayman, KY1-1104, Cayman Islands
Phone: +1 (345) 949-7099
Fax: +1 (345) 949-6819
Email: info@cireba.com

Development Lot 0.41 Acres

Savannah / Lower Valley, Grand Cayman

MLS# 419766

CI\$334,900



CHARLIE BROWN
345-949-7677
charlie@rainbow.ky

This beautiful 0.41 acre lot is located in the desirable Northward area on Dominic Drive. Offering approximately 92 feet of road frontage . The property provides ample space and flexibility for your ideal build. All infrastructure is in place, making this an excellent opportunity to construct your dream home, duplex, or triplex in a well developed community. The neighborhood features well-maintained homes and a welcoming atmosphere. Conveniently situated near Countryside Shopping Center, schools, shops, and restaurants. This lot combines convenience, and strong investment potential.

Essential Information

Type	Status	MLS#	Listing Type
Land	New	419766	Low Density Residential

Key Details

Width	Depth
120	169

The information contained herein has been furnished by the owner and or their nominee and represented by them to be accurate. The listing company, agent and CIREBA MLS disclaims any liability or responsibility for any inaccuracies, errors or omissions in the represented information and all the information contained herein is subject to errors, omissions, price changes, prior sale or withdrawal, without notice and is at all times subject to verification by the purchaser.

Acreage
0.41

View
Garden View