



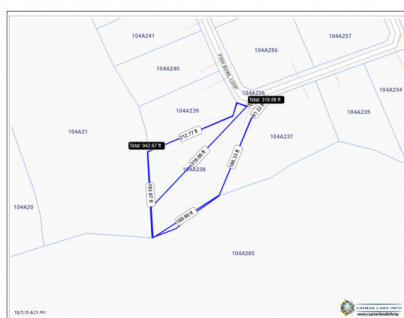
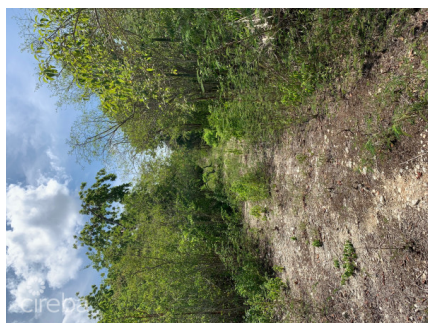
256 Crighton Building, Crewe Rd, PO BOX 1977,
Grand Cayman, KY1-1104, Cayman Islands
Phone: +1 (345) 949-7099
Fax: +1 (345) 949-6819
Email: info@cireba.com

Musical Orchids

Cayman Brac Centre, Cayman Brac

MLS# 419824

CI\$108,000



LIESEL VAN DER TOUW
liesel@eracayman.com

Prime bluff land in an up coming neighborhood. The land is partially cleared and filled. Ample room for your dream home. Very high elevation. Property comes with a well.

Essential Information

Type
Land

Status
New

MLS#
419824

Listing Type
**Low Density
Residential**

The information contained herein has been furnished by the owner and or their nominee and represented by them to be accurate. The listing company, agent and CIREBA MLS disclaims any liability or responsibility for any inaccuracies, errors or omissions in the represented information and all the information contained herein is subject to errors, omissions, price changes, prior sale or withdrawal, without notice and is at all times subject to verification by the purchaser.

Key Details

Width	Depth
193	318
Acreage	View
0.88	Inland