



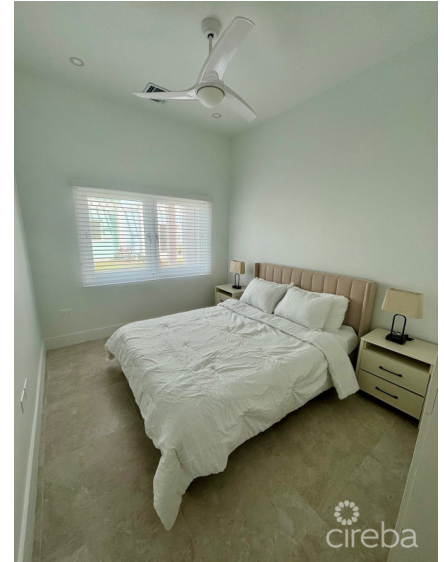
256 Crighton Building, Crewe Rd, PO BOX 1977,
Grand Cayman, KY1-1104, Cayman Islands
Phone: +1 (345) 949-7099
Fax: +1 (345) 949-6819
Email: info@cireba.com

The Meadows Phase 2 - Seagrape 1 Bedroom

West Bay, Grand Cayman

MLS# 418910

CI\$449,000





DEBI BERGSTROM
 345 946-3343
 dbergstrom@edgewater.ky



ELLA BERGSTROM
 emulroy@edgewater.ky

The Sea Grape unit at The Meadows in West Bay, Grand Cayman, is a thoughtfully designed 700-square-foot townhome. The complex itself has to be seen to be appreciated. Phase One is now complete and a thriving community of residents are living in the properties this listed unit is in Phase Two and due for completion in July 2026. Layout: One bedroom, one bathroom, a fully fitted compact kitchen with stainless steel appliances, and a laundry closet with washing machine & tumble dryer. Living Space: The master bedroom overlooks a private patio, accessible via French doors from the living area, which is in prime position between the pool and the lake in Phase Two. Community Amenities: Residents have access to two swimming pools, a fully equipped gymnasium, and two clubhouses with a games room and recreational areas. The Meadows at Batabano is a 113-home residential development located at the end of the Esterly Tibbetts highway on Batabano Road in West Bay. Built by Edgewater Development who have over 20 years building both luxury homes and commercial and residential property in the Cayman Islands.

Essential Information

Type Residential	Status Pen/Con	MLS# 418910	Listing Type Semi-detached / Duplex / Triplex
----------------------------	--------------------------	-----------------------	---

Key Details

Bed 1	Bath 1
-----------------	------------------

View
Pool View, Lake View

Year Built 2025	Sq.Ft. 700	Pets Allowed: Yes
---------------------------	----------------------	-----------------------------

Additional Feature

Den No	Pool Yes	Furnished No
------------------	--------------------	------------------------