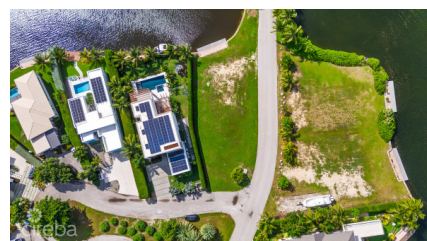


## Grand Harbour 0.32 Acres, Canal Corner Lot

Prospect/Spotts, Grand Cayman

MLS# 419897

**CI\$549,000**



**COLLEEN MARTIN**

colleen@propertycayman.com

A corner canal front lot with dock in Grand Isle, Grand Harbour. This rare find sits in one of Cayman's most desirable waterfront communities. The expansive corner lot, spanning 13,909 sq. ft., is positioned at the intersection of Grand Isle Way and Waterside Crescent, it is one of the largest and last remaining canal parcels in Grand Harbour. With open water views across to The Careenage, the site offers both privacy and perspective—a hidden gem ready for your dream home. Enjoy direct canal access from your private dock and the convenience of a walkable lifestyle. Grand Harbour's shops, restaurants, schools, gyms, and everyday essentials are all just a short stroll away. The Grand Isle community will soon feature a gated entrance, enhancing both exclusivity and long-term value. Secure your place in this thriving neighbourhood while opportunities remain.

## Essential Information

The information contained herein has been furnished by the owner and or their nominee and represented by them to be accurate. The listing company, agent and CIREBA MLS disclaims any liability or responsibility for any inaccuracies, errors or omissions in the represented information and all the information contained herein is subject to errors, omissions, price changes, prior sale or withdrawal, without notice and is at all times subject to verification by the purchaser.

Type <b>Land</b>	Status <b>Pen/Con</b>	MLS# <b>419897</b>	Listing Type <b>Low Density Residential</b>
---------------------	--------------------------	-----------------------	--

## Key Details

Width <b>78</b>	Depth <b>211</b>
Acreage <b>0.32</b>	View <b>Canal Front</b>