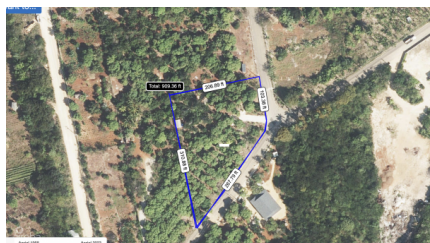


Rare 1-acre Farm Paradise In Up-and-coming High Rock - East End's Hottest Farming Location

East Interior, Grand Cayman

MLS# 420111

CI\$325,000





JENNIFER PHILPOTT
345-936-7400
jennifer@shoreline.ky

Just minutes from Health City, this lush 1-acre farm is bursting with mature, bearing fruit trees on legendary red Cayman soil: Coconut Julie & Nam Doc mango Avocado Soursop Papaya Starfruit Guinip Banana & plantain groves Everything is already in place for effortless island farming: Full irrigation system Private well + heavy-duty pump City water connected Large shed Separate full bathroom with septic system Fully fenced & gated Build your dream home surrounded by your own private orchard, create a boutique agro-tourism business, or simply land-bank in one of the smartest growth areas on island. In today's red-hot East End market, turnkey acre farms this close to Health City are vanishing overnight. Schedule your private tour today - because tomorrow this one may be gone. Ready for immediate possession (Drone shot boundary lines are approximate; Lands and Registry map w/ measurements is accurate)

Essential Information

Type	Status	MLS#	Listing Type
Land	Pen/Con	420111	Agriculture

Key Details

Width	Depth
310	208
Acreage	View
1.00	Inland

Additional Feature

Zoning	Covenants	Road Frontage	Soil
Agriculture/Residential	No	367	Other