



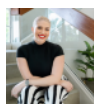
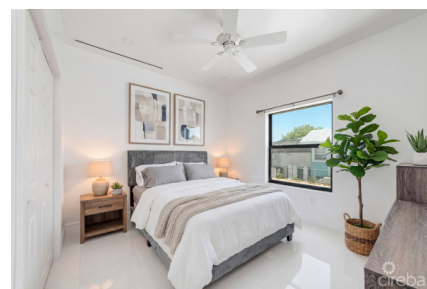
256 Crighton Building, Crewe Rd, PO BOX 1977,
Grand Cayman, KY1-1104, Cayman Islands
Phone: +1 (345) 949-7099
Fax: +1 (345) 949-6819
Email: info@cireba.com

Brand New 3-bedroom Home In Hyre View

East End / High Rock, Grand Cayman

MLS# 420148

CI\$480,000



MARIA SANCHEZ

maria@c21cayman.com

Discover contemporary living in this brand new modern 3-bedroom home, perfectly positioned as half a duplex in a quiet East End community. Designed with comfort and style in mind, the home features a bright open-concept layout, clean modern finishes, and thoughtfully planned living spaces ideal for families, or investors. With construction underway, completion will be in just the next few months. You can enjoy the tranquility of a quiet community while remaining conveniently close to essential amenities, schools, and main road access. This property offers the perfect blend of modern design, low-maintenance living, and a peaceful residential setting. A fantastic opportunity to own a stylish new home at an unbeatable price point.

Essential Information

Type Residential	Status Pen/Con	MLS# 420148	Listing Type Semi-detached / Duplex / Triplex
----------------------------	--------------------------	-----------------------	---

Key Details

Bed 3	Bath 2
-----------------	------------------

View
Garden View

Year Built 2026	Sq.Ft. 1,280	Pets Allowed: Yes
---------------------------	------------------------	-----------------------------

Additional Feature

Den No	Pool No	Furnished No
------------------	-------------------	------------------------