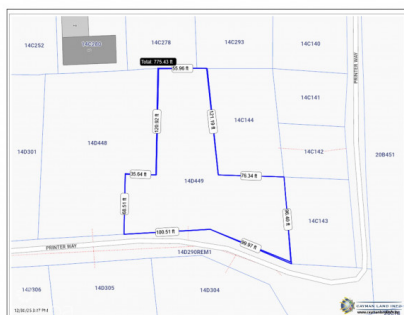


Commercial Parcel Off Printer Way

George Town, Grand Cayman

MLS# 420163

CI\$1,650,000



STEVE PARSONS

345 949-5916

steve@propertypals.ky



PAM PARSONS

pam@propertypals.ky

INCREDIBLE ROAD VISIBILITY IN A HIGH TRAFFIC AREA. If your business (new or old!) wants attention, THIS is the lot you need to make that happen. One of the busiest intersections in Cayman, with access off the mini runway-area roundabout and Thomas Russell Way makes this prime property easily accessible. With 200 feet on the road and great depth, this commercially-zoned property provides a solid growth opportunity for your business. Property is priced in line with a similar parcel selling for about the same per square foot price.

Essential Information

The information contained herein has been furnished by the owner and or their nominee and represented by them to be accurate. The listing company, agent and CIREBA MLS disclaims any liability or responsibility for any inaccuracies, errors or omissions in the represented information and all the information contained herein is subject to errors, omissions, price changes, prior sale or withdrawal, without notice and is at all times subject to verification by the purchaser.

Type Land	Status New	MLS# 420163	Listing Type Commercial
---------------------	----------------------	-----------------------	-----------------------------------

Key Details

Width 200	Depth 190
Acreage 0.49	View Garden View

Additional Feature

Zoning Commercial	Covenants No	Road Frontage 200	Soil Marl
-----------------------------	------------------------	-----------------------------	---------------------