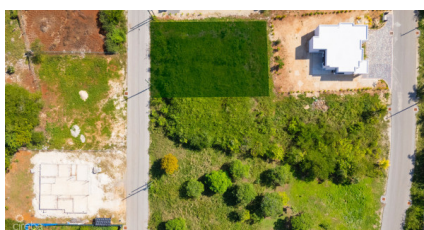


Viola Way - Fantastic House Lot (0.2389 Acre, Savannah)

Savannah / Lower Valley, Grand Cayman

MLS# 420165

CI\$215,000



MARK GAUS

345-946-9961

mark.gaus@remax.ky

Introducing this fantastic homesite in a great new community in Savannah. New homes are popping up in this family friendly subdivision and it would be an excellent choice for your family. Viola Way is a quiet street with limited traffic where kids can play. 0.2389 acres is the perfect property for your new home, or hold and landbank for further capital appreciation. With so much coming to the Savannah and Newlands area, there are amenities all around - shopping, schools, restaurants and banks. Build your dream home here or landbank!

Essential Information

Type	Status	MLS#	Listing Type
Land	Current	420165	Low Density Residential

Key Details

The information contained herein has been furnished by the owner and or their nominee and represented by them to be accurate. The listing company, agent and CIREBA MLS disclaims any liability or responsibility for any inaccuracies, errors or omissions in the represented information and all the information contained herein is subject to errors, omissions, price changes, prior sale or withdrawal, without notice and is at all times subject to verification by the purchaser.

Width
80

Depth
135

Acreage
0.24

View
Garden View, Inland