



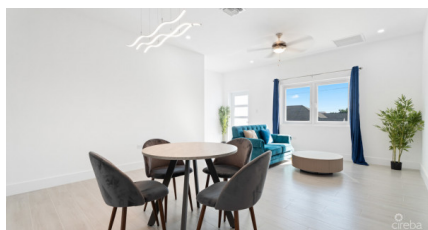
256 Crighton Building, Crewe Rd, PO BOX 1977,  
Grand Cayman, KY1-1104, Cayman Islands  
Phone: +1 (345) 949-7099  
Fax: +1 (345) 949-6819  
Email: info@cireba.com

## Brand New Hinds Way Duplex - Unit 1 And 2 (4 Bed, 4 Bath)

South Sound, Grand Cayman

MLS# 420169

**CI\$1,995,000**



**MARK GAUS**

345-946-9961

mark.gaus@remax.ky

Absolutely incredible brand new duplex in the heart of South Sound / George Town South. Each side delivers 4 bedrooms and 4 bathrooms and is super spacious with plenty of storage. Located off Walkers Road on Hinds Way this property is close to everything - schools, shopping, seamless access to George Town, Smith Cove and Seven Mile Beach. This truly is the perfect opportunity to live in one side and rent the other, or rent both sides - this will be a fantastic rental investment! Estimated Gross Rental Income CI\$144,000 per annum! Built to withstand all weather yet very energy efficient - concrete block construction, hurricane impact windows and doors with metal standing seam roofing. The property offers multiple balconies and two extra large fully gated back gardens. Must see to appreciate. Priced to sell this property will not last long. Call today!

## Essential Information

The information contained herein has been furnished by the owner and or their nominee and represented by them to be accurate. The listing company, agent and CIREBA MLS disclaims any liability or responsibility for any inaccuracies, errors or omissions in the represented information and all the information contained herein is subject to errors, omissions, price changes, prior sale or withdrawal, without notice and is at all times subject to verification by the purchaser.

Type <b>Multi Unit</b>	Status <b>Current</b>	MLS# <b>420169</b>	Listing Type <b>Duplex</b>
---------------------------	--------------------------	-----------------------	-------------------------------

**Key Details**

Bed <b>8</b>	Bath <b>8</b>
-----------------	------------------

View  
**Garden View, Inland**

Year Built <b>2025</b>	Sq.Ft. <b>4,760</b>	Pets Allowed: <b>No</b>
---------------------------	------------------------	----------------------------