



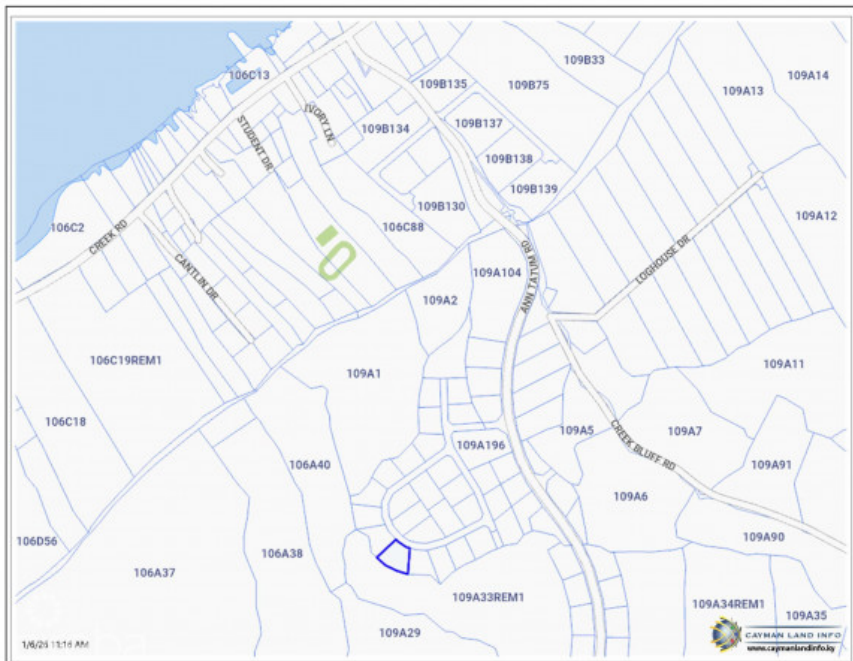
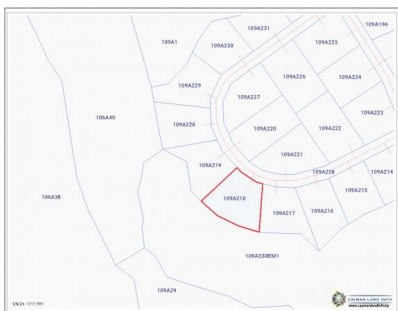
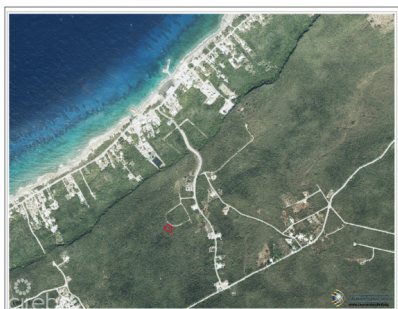
256 Crighton Building, Crewe Rd, PO BOX 1977,
Grand Cayman, KY1-1104, Cayman Islands
Phone: +1 (345) 949-7099
Fax: +1 (345) 949-6819
Email: info@cireba.com

Cayman Brac Bluff Lot (.2901 Acre)

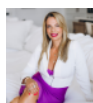
Cayman Brac East, Cayman Brac

MLS# 420178

CI\$55,000



HARRIET LOTT
harriet@tensails.ky



LYSSETTE VALEK GOMEZ
lyssette@tensails.ky

Located on Cayman Brac's Bluff, High & dry, 0.2901 acre. Private, 83' to 91' Elevation lot. .2901 acre to build your dream vacation, retirement home, or investment duplex. Invest now! While prices are still affordable! Cayman Brac is ready for significant developments, already with an international airport, Medical facilities, new school facilities, and future infrastructure plans. You need a Piece of Cayman Brac for your portfolio! Buy as an investment, in 5 years....you'll be happy you did.

Essential Information

Type	Status	MLS#	Listing Type
Land	Current	420178	Little Cayman / Cayman Brac

Key Details

Width	Depth
155	115

The information contained herein has been furnished by the owner and or their nominee and represented by them to be accurate. The listing company, agent and CIREBA MLS disclaims any liability or responsibility for any inaccuracies, errors or omissions in the represented information and all the information contained herein is subject to errors, omissions, price changes, prior sale or withdrawal, without notice and is at all times subject to verification by the purchaser.

Acreage
0.29

View
Garden View