



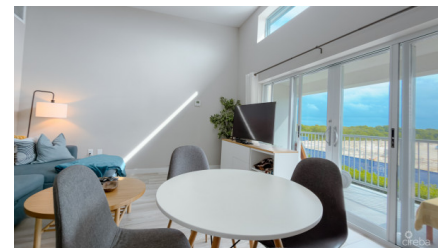
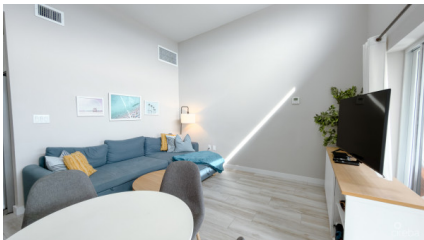
256 Crighton Building, Crewe Rd, PO BOX 1977,
Grand Cayman, KY1-1104, Cayman Islands
Phone: +1 (345) 949-7099
Fax: +1 (345) 949-6819
Email: info@cireba.com

Downtown Reach 1 Bed Condo

George Town, Grand Cayman

MLS# 420239

CI\$425,000





CAREY BURNS

carey@williams2realestate.com

Affordable Investment Condo in Prime George Town Location! Discover an affordable, income-generating 1-bedroom 1.5 bath condo at Downtown Reach in George Town. Gated, modern, and just minutes from central amenities. Call us today to view. Smart City Living Meets Strong Rental Returns Welcome to Downtown Reach, a secure, gated community located just off the Linford Pierson Highway, perfectly positioned for quick and easy access to the heart of George Town. Whether you're a first-time buyer, a young professional, or an investor looking for an affordable condo in George Town, this 1-bedroom condo offers convenience, comfort, and consistent returns. The condo has been very nicely furnished with elegant touches and lots of upgrades. With its prime location, you can REACH DOWNTOWN in under five minutes, making it ideal for those who value proximity to work, restaurants, shopping, and the airport. The complex is still relatively new, giving it a clean, modern feel and the peace of mind that comes with quality construction and low maintenance requirements. This condo has proven to be a strong investment property in the Cayman Islands, consistently renting at approximately CI\$2600 per month. Whether you plan to live in it, rent it long-term, or use it as a short-term rental, the versatility of this property makes it a smart financial move. Secure, Gated, and Hassle-Free Down Town Reach offers gated access, providing peace of mind in a secure environment. The community layout and design allow for easy, low-maintenance living, making it ideal for anyone looking to enjoy the Cayman lifestyle without the burden of extensive upkeep. Parking is included, and the location off Linford Pierson means you can be at the airport, supermarkets, or waterfront restaurants in minutes. Ideal for Investors or First-Time Buyers This is a rare opportunity to get into a well-located, income-generating property in George Town at an accessible price point. Whether you're growing your real estate portfolio or stepping into the property market for the first time, Down Town Reach is a solid choice. Call us to view this condo today and explore the possibilities that come with smart urban living in Grand Cayman. How do you want to live your life?

Essential Information

Type	Status	MLS#	Listing Type
Residential	Current	420239	Condominiums

Key Details

Bed	Bath
1	1.5

View
Garden View

Year Built Sq.Ft.
2020 646

Additional Feature

Den Floor Level Furnished
No 2 Yes