



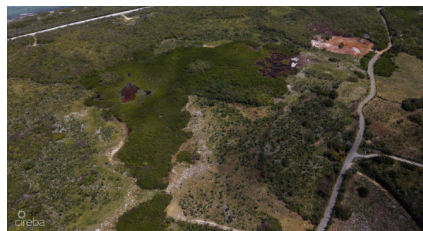
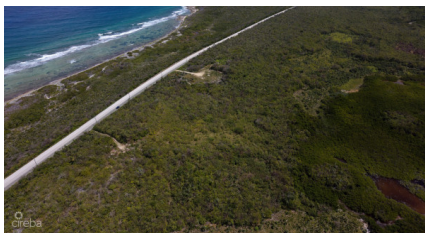
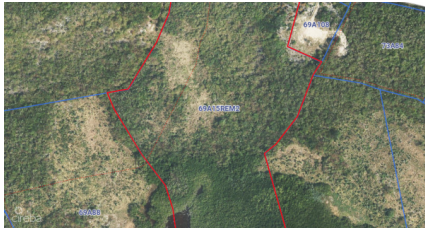
256 Crighton Building, Crewe Rd, PO BOX 1977,
Grand Cayman, KY1-1104, Cayman Islands
Phone: +1 (345) 949-7099
Fax: +1 (345) 949-6819
Email: info@cireba.com

9.68a Development Parcel Queens Highway

North East Coast / Colliers, Grand Cayman

MLS# 420241

CI\$2,500,000





NICHOLAS DIBB
 345-233-3000
 nick.dibb@remax.ky



COLBY SEYMOUR
 colby.seymour@remax.ky

An increasingly rare opportunity to acquire 9.68 acres of prime land in East End, ideally positioned just off the Queens Highway - offering scale, flexibility, and long-term upside in one of the island's most promising growth corridors. This expansive parcel represents multiple compelling use cases. Whether you're seeking to land bank for future appreciation, create a private estate with unparalleled space and privacy, or explore development potential, this property offers the size and versatility to bring bold visions to life. With nearly 10 acres at your disposal, the land lends itself perfectly to a luxury single-family residence surrounded by lush gardens, orchards, or recreational space - while still allowing room for additional structure, guest cottage, or amenities. Alternatively, for investors and developers, the parcel's scale and location open the door to future subdivision or development, subject to planning approvals. Set in the peaceful and authentic East End, the property enjoys a tranquil countryside feel while remaining easily accessible via the Queens Highway. East End continues to attract attention for its natural beauty, lower density, and growing appeal among buyers seeking space, privacy, and long-term value. Key Highlights: Generous 9.68-acre parcel Located just off the Queens Highway Ideal for land banking, private estate living, or development Excellent long-term upside in an emerging area Rare opportunity to secure acreage of this scale in Grand Cayman Large parcels like this are becoming increasingly scarce. This is a strategic acquisition for those looking to secure land today with the flexibility to shape tomorrow. ** Drone footage to follow!**

Essential Information

Type	Status	MLS#	Listing Type
Land	Reduced	420241	Low Density Residential

Key Details

Width	Depth
454	1,009
Acreage	View
9.68	Inland, Water View