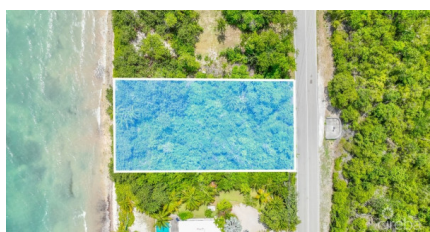
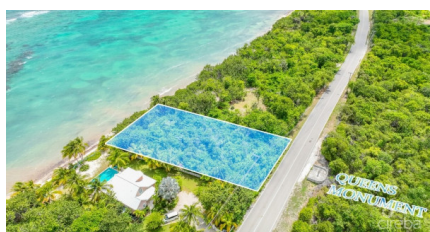


## 0.52acre Oceanfront Gem On Queen's Highway

North East Coast / Colliers, Grand Cayman

MLS# 418946

**US\$860,000**





**CHANTELE MILLER**  
345-233-1385  
chantele.miller@remax.ky

Don't miss the opportunity to own your piece of oceanfront paradise on the Queen's Highway!

Build your dream home on this incredible 0.52-acre oceanfront parcel and enjoy endless privacy, peace, and serenity. This location boasts a kaleidoscope of ocean blues, cool trade winds, beautiful sunrises, and stunning sunsets. The reefs, just 20 yards out from the shoreline, are waiting to be snorkeled and explored, offering a unique experience for marine enthusiasts. The property is also ideal for enjoying kayaking, paddle-boarding, and some of the very best offshore snorkeling on the island!

Enjoy the diverse underwater topography, from lush sea beds to individual coral communities and stretches of barrier reef. This premier location is home to many species of fish and other marine life. For divers and snorkeling enthusiasts, you will also have close proximity to access the famous Babylon Dive Site, known for its gorgeous freestanding pinnacle rising from over 100 feet in the depths to 45 feet at its peak. The ocean sponge and coral growth allow divers to swim through, on both sides, creating a riveting experience!

Away from the hustle and bustle, embrace the "Island Time" vibe on the North East Coast where you enjoy other local attractions and amenities such as the Queen Elizabeth Botanic Park, Crystal Caves, and Parrot Sanctuary, as well as various bars and restaurants. Adjacent to the Queen's Monument, 8-12 ft above sea level, this unique, private, oceanfront property is yours for the taking!

Essential Information

|      |         |        |                         |
|------|---------|--------|-------------------------|
| Type | Status  | MLS#   | Listing Type            |
| Land | Current | 418946 | Low Density Residential |

Key Details

|         |             |
|---------|-------------|
| Width   | Depth       |
| 95      | 232         |
| Acreage | View        |
| 0.52    | Water Front |