



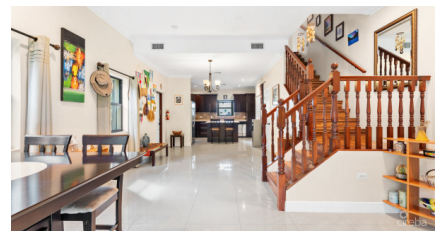
256 Crighton Building, Crewe Rd, PO BOX 1977,
Grand Cayman, KY1-1104, Cayman Islands
Phone: +1 (345) 949-7099
Fax: +1 (345) 949-6819
Email: info@cireba.com

Hilton Estates - 2 Bed End Unit, Excellent Location

South Sound, Grand Cayman

MLS# 420300

CI\$538,500





SAMIRAN SAHA
samiran.saha@remax.ky

From the moment you arrive, this beautifully positioned 2 bed, 2.5 bath end-unit townhome offers a sense of privacy and tranquility that is hard to find. Tucked away within the well-maintained Hilton Estates community, this home benefits from a screened-in patio and a natural green buffer on the adjacent land, creating a peaceful environment. Inside, the ground floor features a bright and open layout designed for both everyday living and entertaining. The well-sized kitchen offers ample storage and flows seamlessly into the living and dining areas, while a convenient half bath adds functionality when hosting guests. Natural light fills the space, enhancing the welcoming feel throughout. Upstairs, both bedrooms are generously sized with ensuite bathrooms, good closet space, and ceiling heights that create a wonderful sense of volume. An additional linen closet at the top of the stairs adds practical storage. This home stands out for its thoughtful use of space and comfortable room sizes throughout! Recent upgrades include new Rheem air conditioning systems, providing improved efficiency, lower utility costs, and peace of mind for future owners. Hilton Estates is a family-friendly, pet-friendly community featuring pools, speed bumps throughout for safety, and two designated parking spaces per unit. Its excellent location near schools, shopping, and everyday conveniences makes it ideal for families, while strong rental demand also makes it a smart investment opportunity. Quiet, comfortable, and immediately inviting, this home simply feels right! Whether you're looking for a place to settle in or a property that will rent with ease, this Hilton Estates townhome delivers on lifestyle, location, and long-term value. Call me now to take a look - with this space, location and price point, it will not last long!

Essential Information

Type	Status	MLS#	Listing Type
Residential	New	420300	Condominiums

Key Details

Bed	Bath
2	2.5

View
Garden View

Year Built	Sq.Ft.	Pets Allowed:
2017	1,464	Yes

Additional Feature

The information contained herein has been furnished by the owner and or their nominee and represented by them to be accurate. The listing company, agent and CIREBA MLS disclaims any liability or responsibility for any inaccuracies, errors or omissions in the represented information and all the information contained herein is subject to errors, omissions, price changes, prior sale or withdrawal, without notice and is at all times subject to verification by the purchaser.

Den
No

Floor Level
1

Furnished
Yes