



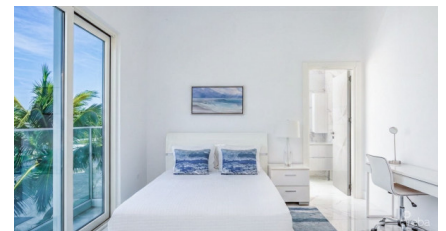
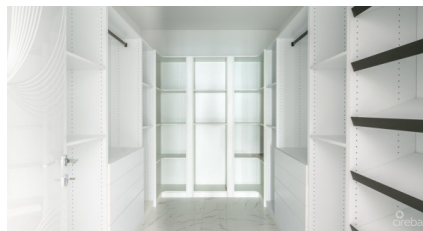
256 Crighton Building, Crewe Rd, PO BOX 1977,  
Grand Cayman, KY1-1104, Cayman Islands  
Phone: +1 (345) 949-7099  
Fax: +1 (345) 949-6819  
Email: info@cireba.com

## Orchid Cove - Brand New Seafront Residences #5

South Sound, Grand Cayman

MLS# 420397

**US\$1,750,000**





**KIM LUND**  
 345-949-9772  
 kim.lund@remax.ky



**CINDY RAYMOND**  
 345-949-9752  
 cindy.raymond@remax.ky

Incredible location, directly on the Caribbean Sea with expansive sunset and seafront views from the pool deck and Cabana. This unique and large three storey residence is on the inland side of the building with lots of windows, views, and natural light.

Interiors are designed in a modern contemporary style with large tiles throughout and granite countertops. A gorgeous staircase designed in Italy with steel and see-through acrylic provides access between the three levels. The master bedroom has a large walk-in closet, customized and already fitted out with shelving and drawers and the second bedroom has a den. The kitchen is well appointed with high quality Bosch appliances.

Orchid Cove has been engineered and built extremely well and is constructed like a fortress. Elevator access is from the parking area to the top floor. There is underbuilding parking for two cars and a storage locker. This is a very low density development with lots of space, landscaping, and open areas. The Seafront pool has an infinity edge and right behind it is a jacuzzi and kid's pool. There is a separate fitness facility that has a nice view of the pool and a Seafront gazebo where you can relax and look out to the Sea without being directly in the sun. Orchid Cove is a rare gem where you can enjoy an amazing Caribbean lifestyle, directly on the Sea, in a brand new, well built residence to

## Essential Information

Type	Status	MLS#	Listing Type
<b>Residential</b>	<b>Current</b>	<b>420397</b>	<b>Condominiums</b>

## Key Details

Bed	Bath
<b>2</b>	<b>2</b>

View  
**Water Front**

Year Built	Sq.Ft.	Pets Allowed:
<b>2026</b>	<b>1,275</b>	<b>Yes</b>

## Additional Feature

Den	Floor Level	Furnished
<b>No</b>	<b>2</b>	<b>No</b>