



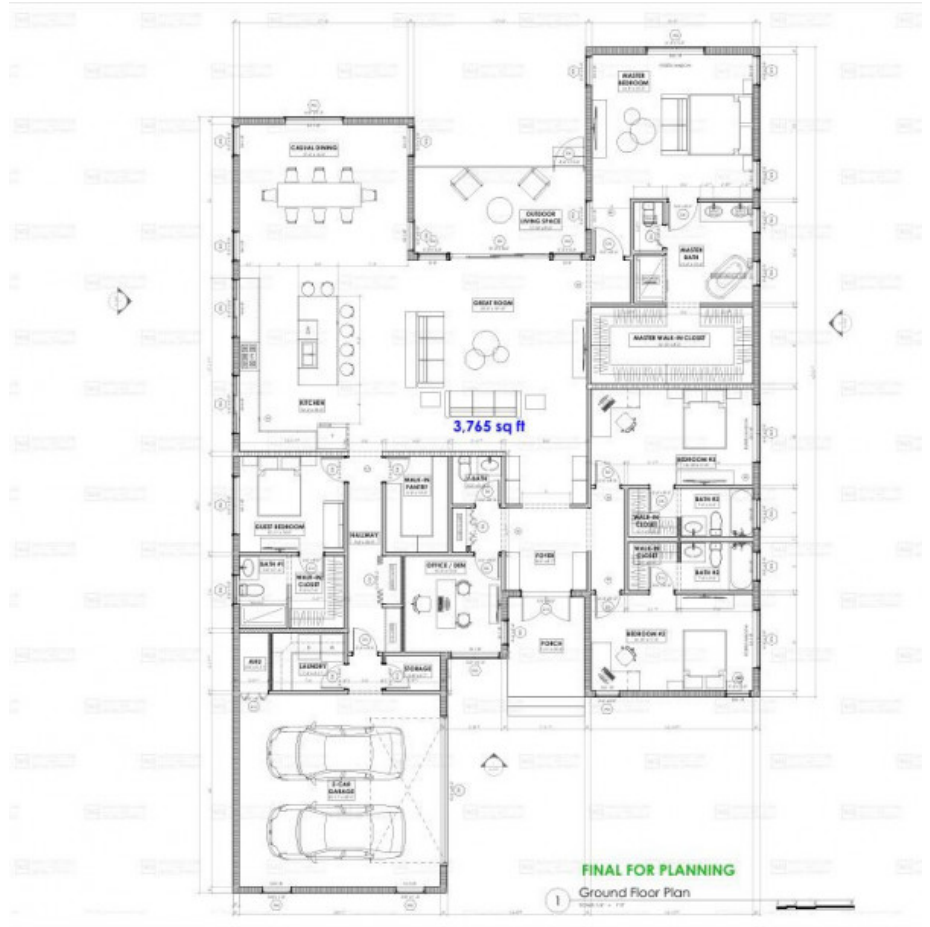
256 Crighton Building, Crewe Rd, PO BOX 1977,
Grand Cayman, KY1-1104, Cayman Islands
Phone: +1 (345) 949-7099
Fax: +1 (345) 949-6819
Email: info@cireba.com

0.3367 Duplex Land Lot With Approved Plans

Savannah / Lower Valley, Grand Cayman

MLS# 420427

CI\$249,000





YOANA BONILLA
yoana@c21cayman.com

Discover an exceptional opportunity in the heart of Savannah with this spectacular 0.3367 acre parcel of land, perfectly positioned for both lifestyle buyers and savvy investors. This property offers outstanding flexibility, ideal for those looking to build an income-producing investment properties or create a custom forever home with additional rental potential. The generous lot size provides ample space for thoughtful design, outdoor living, and long-term value growth. Even more compelling, the property comes with approved plans for a phenomenal 3,765 sq ft single-family residence (plans sold separately) featuring: 4 spacious bedrooms 4.5 bathrooms Double-car garage Expansive, well-designed living spaces Whether you choose to move forward with the stunning pre-approved design or take advantage of the duplex zoning for maximum return on investment, this property presents a rare and versatile opportunity in one of Savannah’s most desirable locations. Build your vision. Maximize your investment. Secure your future.

Essential Information

Type Land	Status Current	MLS# 420427	Listing Type Low Density Residential
---------------------	--------------------------	-----------------------	--

Key Details

Width 90	Depth 172
Acreage 0.34	View Garden View