



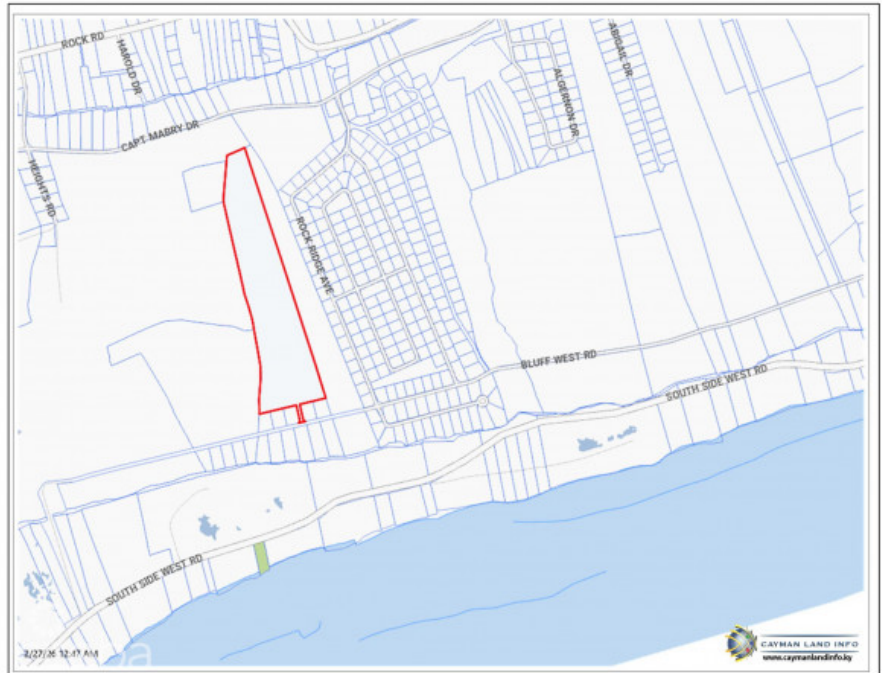
256 Crighton Building, Crewe Rd, PO BOX 1977,  
Grand Cayman, KY1-1104, Cayman Islands  
Phone: +1 (345) 949-7099  
Fax: +1 (345) 949-6819  
Email: info@cireba.com

## Brac Bluff Land 18.8 Acres-prime Investment Property

Cayman Brac West, Cayman Brac

MLS# 420482

**CI\$1,400,000**





**PHILLIP WOOD**  
345-623-1400  
phillip.wood@evrealestate.com

PRICED TO SELL! Exceptional 18.8-acre development parcel located on the sought-after Bluff in Cayman Brac. Unlike many large parcels in this area, this property is not landlocked and benefits from direct right-of-way access from Bluff West Road on the south side, offering convenient entry and reduced development costs. This versatile tract is ideal for: Subdivision development Residential homes or apartment buildings Agricultural use or farmland Long-term land banking investment The elevation of the Bluff makes it one of Cayman Brac's most desirable areas, offering cooling breezes, expansive views, and strong development potential. Cayman Brac continues to show steady growth in its real estate market. The island offers:  
\*Reliable utilities and telecommunications \*Well-maintained road network \*Airport with regular connections to Grand Cayman \*Established schools and healthcare facilities \*World-class diving, hiking trails, caves, and natural attractions Now is an excellent time to secure acreage in a growing market with strong future upside.

## Essential Information

Type <b>Land</b>	Status <b>Current</b>	MLS# <b>420482</b>	Listing Type <b>Little Cayman / Cayman Brac</b>
---------------------	--------------------------	-----------------------	--

## Key Details

Width <b>584</b>	Depth <b>2,200</b>
Acreage <b>18.80</b>	View <b>Garden View</b>