



256 Crighton Building, Crewe Rd, PO BOX 1977,
Grand Cayman, KY1-1104, Cayman Islands
Phone: +1 (345) 949-7099
Fax: +1 (345) 949-6819
Email: info@cireba.com

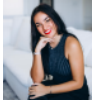
Morganville West Ground Floor Studio- 5k Cash Back At Closing

West Bay, Grand Cayman

MLS# 420553

CI\$299,000





JULIANA MAY MYERS
 juliana@tensails.ky

These thoughtfully designed apartments are built with accessibility and quality in mind, meeting ADA standards and featuring eight designated accessible parking spaces, plus two additional spaces per unit. With only 32 units across four buildings, each with eight apartments, the complex maintains a comfortable, open feel. On-site amenities include a swimming pool, deck, and clubhouse with male and female restrooms, outdoor bike storage, rinse stations for water sports gear, and even a fenced garden area for dogs. Each unit is constructed with durable concrete block and foam insulation, while bathroom walls are made from sheetrock. Built to hurricane standards and elevated 18 feet above the high water mark, the complex offers both security and peace of mind. Energy-efficient features such as solar panels and low-E windows help keep utility costs low. Inside each apartment, quality and functionality shine. The furniture package, included with each unit, features a sofa that converts into a bed with waterproof fabric, solid wood cabinets, and a safe for personal valuables. Quartz countertops shine through the kitchen. Bathrooms include grab bars, a shower chair, and are styled as wet rooms for easy accessibility. Each unit also includes a combined washer-dryer. For flooring, the apartments boast full-body porcelain tiles. With both long-term and short-term rental options allowed by the strata, these apartments make a fantastic investment. Don't miss out on this opportunity! Note: Terms and conditions apply to cash back at closing.

Essential Information

Type	Status	MLS#	Listing Type
Residential	Current	420553	Condominiums

Key Details

Bed	Bath
1	1

View
Garden View

Year Built	Sq.Ft.	Pets Allowed:
2025	430	Yes

Additional Feature

Den	Floor Level	Furnished
No	1	Yes