



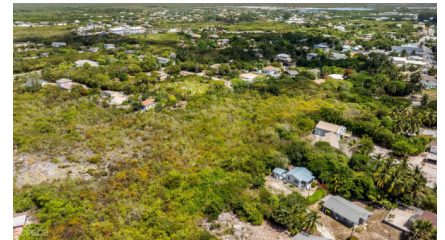
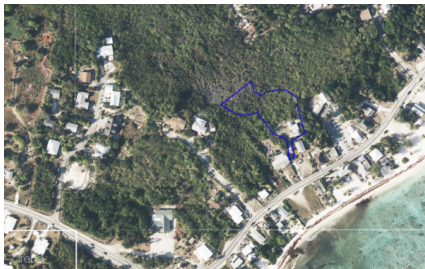
256 Crighton Building, Crewe Rd, PO BOX 1977,
Grand Cayman, KY1-1104, Cayman Islands
Phone: +1 (345) 949-7099
Fax: +1 (345) 949-6819
Email: info@cireba.com

Expansive 0.89 Acre Medium Density Site With Sea Views Bodden Town

Bodden Town / Breakers, Grand Cayman

MLS# 420585

CI\$625,000





JILL DAVISON
jill@1503propertygroup.com

Located in the heart of Bodden Town, this expansive 0.89-acre parcel presents an exceptional opportunity for redevelopment or investment. Elevated approximately 15 feet above sea level, the property benefits from a desirable position with attractive ocean views across the road. The irregular-shaped lot offers ample space and flexibility for a variety of development concepts, whether residential or multi-unit, subject to planning approvals. Zoned for medium-density residential use, the site is well-suited for those looking to maximize its potential in a growing and sought-after area. An existing 2-bedroom, 1-bathroom concrete cottage of approximately 750 square feet sits on the property. While habitable, the structure is best viewed as an interim use or as part of a broader redevelopment vision. With its generous size, elevated setting, and proximity to the ocean, this property represents a rare opportunity to secure a versatile development site in Bodden Town.

Essential Information

| | | | |
|-------------|----------------|---------------|--------------------------------|
| Type | Status | MLS# | Listing Type |
| Land | Current | 420585 | Med Density Residential |

Key Details

| | |
|-------------|--------------------------------|
| Width | Depth |
| 155 | 301 |
| Acreage | View |
| 0.89 | Garden View, Ocean View |