



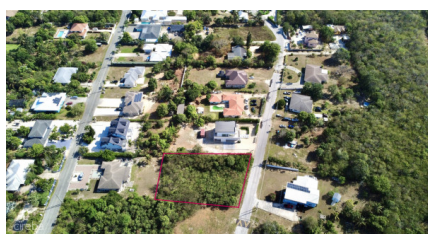
256 Crighton Building, Crewe Rd, PO BOX 1977,
Grand Cayman, KY1-1104, Cayman Islands
Phone: +1 (345) 949-7099
Fax: +1 (345) 949-6819
Email: info@cireba.com

.40 Acre - Bougainvillea Way - Savannah

Savannah / Lower Valley, Grand Cayman

MLS# 420657

CI\$500,000



SUSAN BOYKO

345-943-7326

susan.boyko@remax.ky

Rare opportunity to purchase an oversized .40 acre residential lot in this highly desirable Savannah subdivision. Large homesites in this low-density community are rarely available, making this an exceptional opportunity to build a spacious custom home. The lot is well-sized with mature natural greenery, providing privacy and a peaceful residential setting surrounded by established homes. Conveniently located near Countryside Shopping Village, coffee shops, restaurants, and nearby schools, this property offers the perfect balance of tranquility and everyday convenience. Easy access to main roads and neighborhood amenities makes this an ideal location for families or investors seeking one of the few larger lots available in Savannah's most desirable residential community.

Essential Information

The information contained herein has been furnished by the owner and or their nominee and represented by them to be accurate. The listing company, agent and CIREBA MLS disclaims any liability or responsibility for any inaccuracies, errors or omissions in the represented information and all the information contained herein is subject to errors, omissions, price changes, prior sale or withdrawal, without notice and is at all times subject to verification by the purchaser.

Type
Land

Status
New

MLS#
420657

Listing Type
**Low Density
Residential**

Key Details

Width
100

Depth
160

Acreage
0.40

View
Garden View