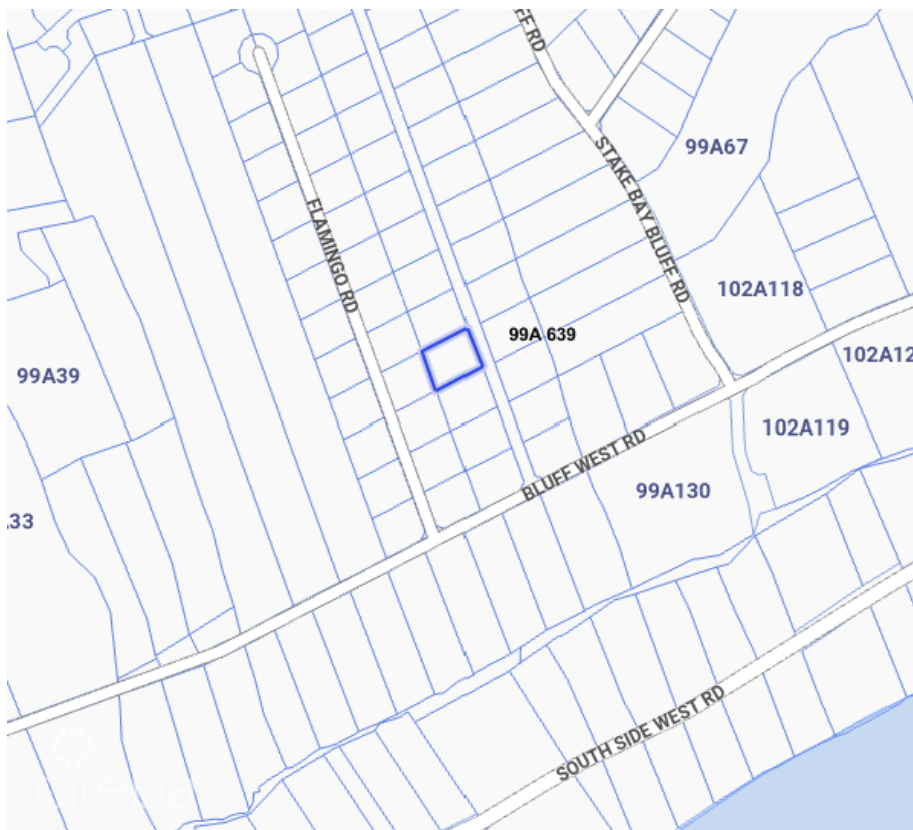
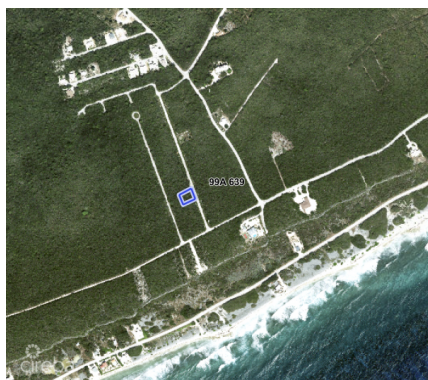
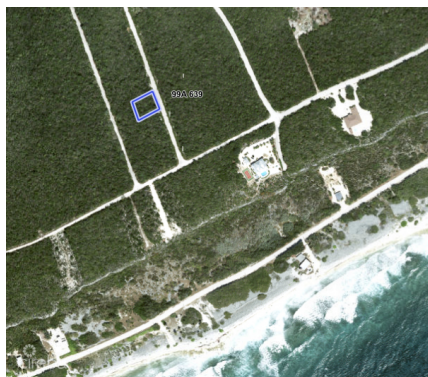


Premium Elevated Lot In The Heart Of Cayman Brac

Cayman Brac Centre, Cayman Brac

MLS# 420699

CI\$62,000





GLORIA EBANKS

gloria@1503propertygroup.com

Parcel 99A639 is a beautifully positioned 0.28acre residential lot located within the emerging Isabela Estates community on the Cayman Brac Bluff. With strong elevation, readytoinstall utilities, and superior road access, this parcel offers a rare combination of safety, convenience, and longterm value. This is an ideal opportunity for a future home, a longterm investment, or a generational landholding in one of the island’s most stable and desirable interior zones. Elevated & Secure 38 feet above sea level Naturally hurricaneresilient Solid limestone foundation ideal for construction BuildReady Infrastructure Electrical Utility: Fully paid and ready for immediate installation. Chip & spray surfaced road (superior to marl) Two road access points into the estate Ideal Central Location 1500 ft from the sea 1 mile from Le Soleil D’or Hotel Quiet, private, and elevated Minutes from airport, grocery, schools, and medical services Strong Investment Profile Located in a growing residential corridor Elevated land continues to appreciate faster than coastal interior lots Perfect for longterm holding or immediate development Parcel 99A639 is ready for transfer and development. Whether you’re building a home or securing land for the future, this lot offers unmatched value at this price point.

Essential Information

Type	Status	MLS#	Listing Type
Land	Current	420699	Little Cayman / Cayman Brac

Key Details

Width	Depth
127	112
Acreage	View
0.2800	Garden View