



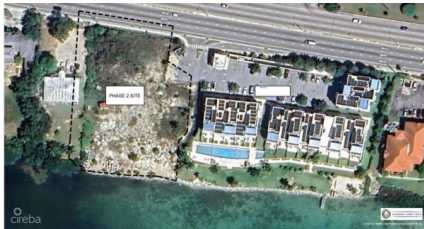
256 Crighton Building, Crewe Rd, PO BOX 1977,  
Grand Cayman, KY1-1104, Cayman Islands  
Phone: +1 (345) 949-7099  
Fax: +1 (345) 949-6819  
Email: info@cireba.com

## Prospect Seafront - Indigo Bay Phase 2 Lot

Prospect/Spotts, Grand Cayman

MLS# 420700

**US\$4,500,000**





**KIM LUND**  
 345-949-9772  
 kim.lund@remax.ky

Presenting an exceptional opportunity: a rare, expansive, and impressively wide Seafront lot that is already filled and primed for development. Imagine creating your vision for a private estate complete with a guest house, spacious garages, or take advantage of its generous size by subdividing into two distinct homesites. Perfectly positioned just outside George Town, this property offers effortless access to Seven Mile Beach and the vibrant town center—both only minutes away. Across the street lies Grand Harbour, a lively hub featuring a grocery store, boutique shops, offices, banking services, top-notch restaurants, and bars, all within easy reach. Situated in an area of Grand Cayman undergoing rapid growth, with new infrastructure and enhanced facilities, this location offers increased desirability and convenience. As part of the Indigo Bay residences and Strata, owners have exclusive access to extensive communal facilities, which include a sizeable area of 2.2 acres with a 400 foot wide Seafront park, yoga area, large swimming pool with separate kids pool/play area, fully equipped gym, community center, storage lockers for paddle boards/kayaks, BBQ area, and the list goes on! Precious few other developments in Cayman combine all of these features. This 1.24 acre parcel offers considerable value and an excellent location suitable for the development of distinguished private residences. The individual Seafront lot may be subdivided into two substantial homesites, each featuring extensive frontage and depth—attributes rarely available near George Town. This represents a unique opportunity to secure a highly desirable site for a single residence or to develop two separate homes.

## Essential Information

Type <b>Land</b>	Status <b>New</b>	MLS# <b>420700</b>	Listing Type <b>Beach Resort Residential</b>
---------------------	----------------------	-----------------------	---

## Key Details

Width <b>210</b>	Depth <b>270</b>
Acreage <b>1.24</b>	View <b>Water Front</b>

## Additional Feature

Zoning <b>Beach Resort/Residential</b>	Covenants <b>No</b>	Soil <b>Rock</b>
---	------------------------	---------------------