



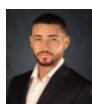
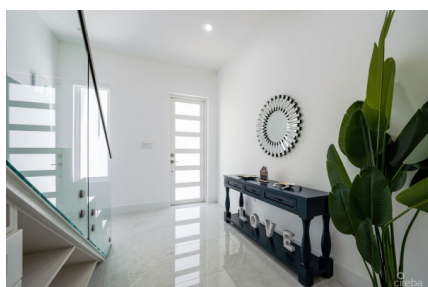
256 Crighton Building, Crewe Rd, PO BOX 1977,
Grand Cayman, KY1-1104, Cayman Islands
Phone: +1 (345) 949-7099
Fax: +1 (345) 949-6819
Email: info@cireba.com

Savannah Edge Unit 1

Savannah / Lower Valley, Grand Cayman

MLS# 420722

CI\$1,150,000



CONOR CRIGHTON
345-949-5250
conorc@crightongroup.com



TAMMY CRIGHTON-BUCK
345-949-5250
tammycb@crightonproperties.com

Contemporary new fourplex featuring four two-story townhomes of 2,572 square feet on Pedro Castle Road. The ground floor includes an open plan living, kitchen, and dining area, powder room and laundry room. On the second floor, spacious bedrooms offer luxurious bathrooms and private balconies with tranquil views. High end finishings and features include 10-foot ceilings, hurricane impact windows, stainless steel appliances, automatic blinds and bar area with wine storage. Furnished and tiled throughout with large windows creating light-filled spaces in living areas. A swimming pool and lush landscaping enhance the outdoor appeal. Enjoy quiet residential living with convenient access to amenities.

Essential Information

Type
Residential

Status
Reduced

MLS#
420722

Listing Type
**Semi-detached /
Duplex / Triplex**

Key Details

Bed
2

Bath
2.5

View
Inland

Year Built
2024

Sq.Ft.
2,572

Pets Allowed:
Yes

Additional Feature

Den
No

Pool
Yes

Furnished
Yes

Property Feature

Yes
Carport

Yes
Pool