



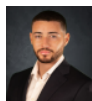
256 Crighton Building, Crewe Rd, PO BOX 1977,  
Grand Cayman, KY1-1104, Cayman Islands  
Phone: +1 (345) 949-7099  
Fax: +1 (345) 949-6819  
Email: info@cireba.com

## Savannah Edge Unit 2

Savannah / Lower Valley, Grand Cayman

MLS# 420724

**CI\$1,249,000**



**CONOR CRIGHTON**  
345-949-5250  
conorc@crightongroup.com



**TAMMY CRIGHTON-BUCK**  
345-949-5250  
tammycb@crightonproperties.com

Contemporary new fourplex featuring four two-story townhomes of 2,572 square feet on Pedro Castle Road. The ground floor includes an open plan living, kitchen, and dining area, powder room and laundry room. On the second floor, spacious bedrooms offer luxurious bathrooms and private balconies with tranquil views. High end finishings and features include 10-foot ceilings, hurricane impact windows, stainless steel appliances, automatic blinds and bar area with wine storage. Furnished and tiled throughout with large windows creating light-filled spaces in living areas. A swimming pool and lush landscaping enhance the outdoor appeal. Enjoy quiet residential living with convenient access to amenities.

## Essential Information

Type <b>Residential</b>	Status <b>Current</b>	MLS# <b>420724</b>	Listing Type <b>Semi-detached / Duplex / Triplex</b>
----------------------------	--------------------------	-----------------------	---

## Key Details

Bed <b>2</b>	Bath <b>2.5</b>
-----------------	--------------------

View  
**Inland**

Year Built <b>2024</b>	Sq.Ft. <b>2,572</b>	Pets Allowed: <b>Yes</b>
---------------------------	------------------------	-----------------------------

## Additional Feature

Den <b>No</b>	Pool <b>Yes</b>	Furnished <b>Yes</b>
------------------	--------------------	-------------------------

## Property Feature

Yes <b>Carport</b>	Yes <b>Pool</b>
-----------------------	--------------------