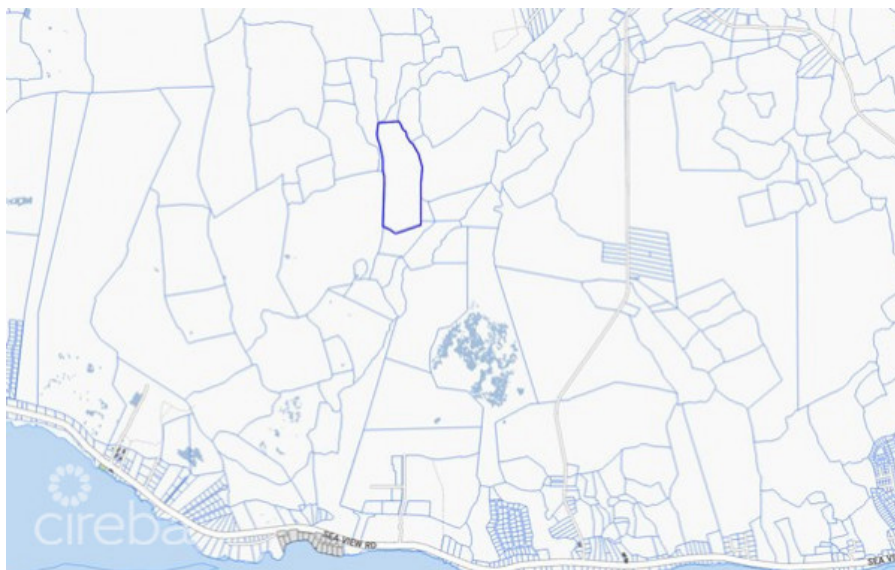


34 Acres East End

East Interior, Grand Cayman

MLS# 420729

CI\$3,927,000



ANGELA L SCOTT

ascott@c21cayman.com



ALEX WOOD

345-949-2100

alex@c21cayman.com

Positioned in the heart of East End, this remarkable 34-acre parcel presents a rare chance to secure a substantial tract of land in one of Cayman's most up-and-coming areas. With a 30-foot road access already paid for and supporting documentation in place, much of the heavy lifting has been done—offering a clear path for future development. This is truly a developer's dream, with ample space and flexibility to bring a wide range of visions to life. Whether you're considering a residential community, private estate, or a long-term investment hold, the possibilities here are endless. The land also lends itself exceptionally well to farming or agricultural use, making it equally attractive for those seeking a more sustainable or income-producing venture. Large parcels with this level of potential, accessibility, and value—just under \$4 million—are becoming increasingly hard to find in East End. An opportunity like this doesn't come around often.

Essential Information

Type
Land

Status
Current

MLS#
420729

Listing Type
Agriculture

Key Details

The information contained herein has been furnished by the owner and or their nominee and represented by them to be accurate. The listing company, agent and CIREBA MLS disclaims any liability or responsibility for any inaccuracies, errors or omissions in the represented information and all the information contained herein is subject to errors, omissions, price changes, prior sale or withdrawal, without notice and is at all times subject to verification by the purchaser.

Width

756

Depth

2,167

Acreage

34.0000

View

Inland

Additional Feature

Covenants

No