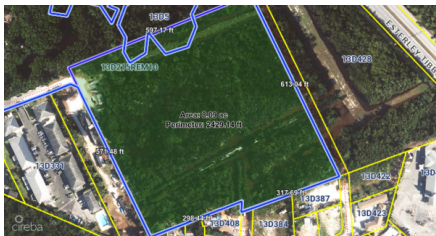
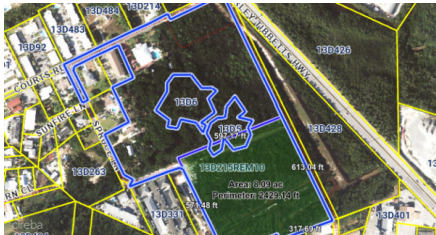


Esterley Tibbetts Highway - 8.09 Acres Prime Development Land

George Town, Grand Cayman

MLS# 420732

CI\$5,706,000



NICHOLAS DIBB
 345-233-3000
 nick.dibb@remax.ky

A rare, high-impact development opportunity to secure 8.09 acres of prime land just off the Esterley Tibbetts Highway - one of Grand Cayman's most strategic and rapidly expanding corridors. Large parcels of this scale, location, and accessibility are becoming increasingly scarce, making this a standout acquisition for developers and investors seeking a well-positioned site with strong long-term fundamentals. Positioned just minutes from Seven Mile Beach, the property benefits from close proximity to major road networks, key infrastructure, and some of the island's most sought-after amenities - placing it firmly within a highly desirable and accessible location. The parcel is currently in the process of being subdivided, with the vendor's layout to remain as designed, providing clarity and structure for future planning. With its scale, location, and limited comparable offerings available, this represents a compelling opportunity for those looking to secure a significant land holding in a high-demand area. Opportunities of this calibre are few and far between - contact me today! *Currently being subdivided*

Essential Information

Type	Status	MLS#	Listing Type
Land	New	420732	High Density Residential

The information contained herein has been furnished by the owner and or their nominee and represented by them to be accurate. The listing company, agent and CIREBA MLS disclaims any liability or responsibility for any inaccuracies, errors or omissions in the represented information and all the information contained herein is subject to errors, omissions, price changes, prior sale or withdrawal, without notice and is at all times subject to verification by the purchaser.

Key Details

Width
592

Depth
607

Acreage
8.09

View
Garden View, Inland