



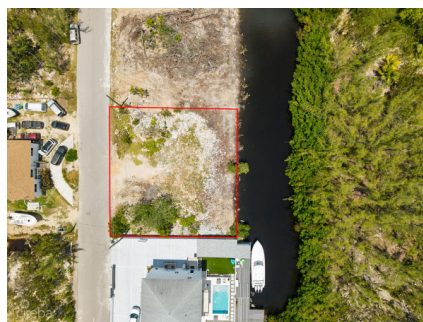
256 Crighton Building, Crewe Rd, PO BOX 1977,  
Grand Cayman, KY1-1104, Cayman Islands  
Phone: +1 (345) 949-7099  
Fax: +1 (345) 949-6819  
Email: info@cireba.com

## 0.2296 Acre - Canal Lot - Filled

Savannah / Lower Valley, Grand Cayman

MLS# 420743

**CI\$265,000**





**YOANA BONILLA**  
yoana@c21cayman.com

Rare opportunity! This canal-front lot is already filled and ready for you to build your dream family home—saving you time and getting you one step closer to waterfront living. Situated on a generous 0.2296-acre lot in the highly sought-after North Sound Estates, this property offers both convenience and lifestyle. You'll be just minutes from Countryside amenities, including schools, restaurants, pharmacies, clinics, salons, and so much more. Perfect for boating enthusiasts, this canal is ideally located just moments from the North Sound entrance, providing quick and easy access to open water. With approximately 100 ft of water frontage, there's ample space to build a spacious private dock—ideal for your boat and waterfront entertaining. Whether you're planning your forever home or a smart investment, this prime piece of land is ready when you are. Don't miss out on this exceptional find!

## Essential Information

Type	Status	MLS#	Listing Type
<b>Land</b>	<b>New</b>	<b>420743</b>	<b>Low Density Residential</b>

## Key Details

Width	Depth
<b>100</b>	<b>101</b>
Acreage	View
<b>0.23</b>	<b>Canal Front</b>