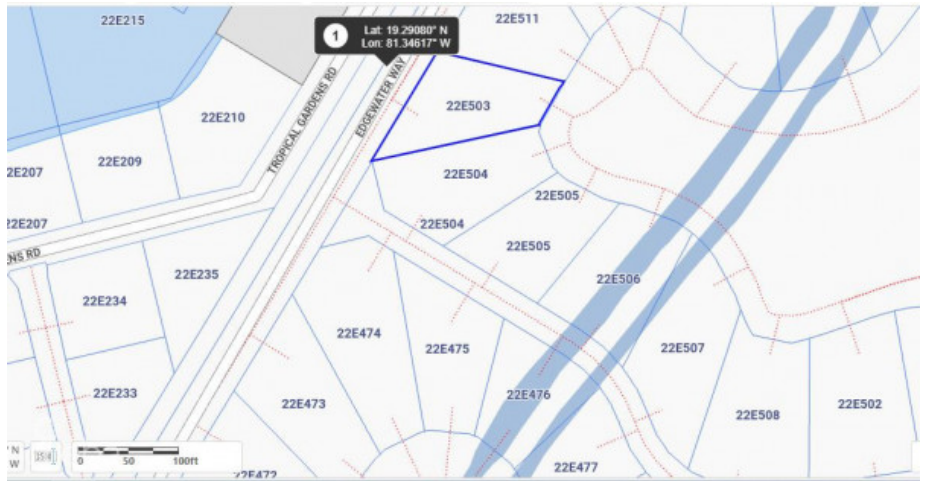


Prime Location Canal Front Harbour Reach

Prospect/Spotts, Grand Cayman

MLS# 419227

CI\$539,000





JERMAINE PERKINS

jermaine@tridentproperties.ky

Prime location, in a sought-after community on the canal, in a serene environment, sounds like paradise & It Is paradise. Canal view house lot in the prestigious Harbour Reach community in Grand Harbour. Harbour Reach is Canal lot community with direct access to the North Sound with a cantilevered 40 foot dock, this and these lots are all filled with compacted aggregate and safety retained by a keystone seawall which means there is no need for the added expense of pilings. Harbour Reach offers a 24-7 manned gatehouse with strong covenants to ensure high standards and quality upliftment of this beautifully landscaped community conveniently located within walking distance of Harbour Walk complex & Grand Harbour Shopping Complex with restaurants, caf, Hurleys supermarket. Cash purchase preferred.

Essential Information

Type Land	Status Back On The Market	MLS# 419227	Listing Type Low Density Residential
---------------------	-------------------------------------	-----------------------	--

Key Details

Width 95	Depth 135
Acreage 0.26	View Canal View