



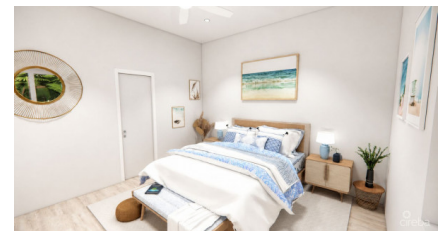
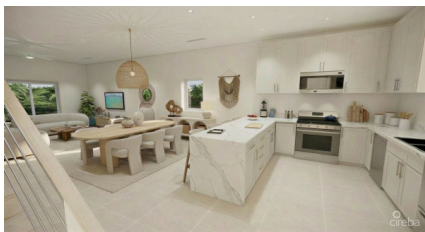
256 Crighton Building, Crewe Rd, PO BOX 1977,  
Grand Cayman, KY1-1104, Cayman Islands  
Phone: +1 (345) 949-7099  
Fax: +1 (345) 949-6819  
Email: info@cireba.com

## Conch Point Landing Unit 7 Three-level Townhome With Rooftop Terrace

West Bay, Grand Cayman

MLS# 420796

**CI\$925,000**





**ALAN O'CONNELL**  
alan.oconnell@remax.ky



**MICHAEL BINCKES**  
345-945-2011  
michael.binckes@remax.ky

Nestled beside Barker's National Park on the peaceful northern coast of West Bay, Conch Point Landing offers modern island living surrounded by natural beauty, white sandy beaches, and turquoise waters. These spacious three-level townhomes are designed for comfortable island living, featuring open-plan interiors, contemporary finishes, quartz countertops, porcelain tile flooring, modern appliances, and generous outdoor spaces. With living areas spread across multiple levels and a private rooftop terrace, these residences offer the perfect setting for relaxing, entertaining, and enjoying Cayman's coastal surroundings. Set in one of Grand Cayman's most scenic coastal areas, Conch Point Landing combines a relaxed island lifestyle with everyday convenience. West Bay offers a growing selection of restaurants, shopping, schools, and lifestyle amenities, while the Esterley Tibbetts Highway provides easy access to Seven Mile Beach, Camana Bay, and George Town. Perfect for those seeking a peaceful island setting, with cycling, walking, kitesurfing, beach days, and Cayman's natural surroundings right on your doorstep. An ideal choice for owner-occupiers, vacation homeowners, or investors looking for modern living near the coast. Let nature be your neighbor at Conch Point Landing. Contact today to learn more and secure your residence at Conch Point Landing with an easy 10% deposit.

## Essential Information

|                            |                      |                       |                                     |
|----------------------------|----------------------|-----------------------|-------------------------------------|
| Type<br><b>Residential</b> | Status<br><b>New</b> | MLS#<br><b>420796</b> | Listing Type<br><b>Condominiums</b> |
|----------------------------|----------------------|-----------------------|-------------------------------------|

## Key Details

|                 |                    |
|-----------------|--------------------|
| Bed<br><b>3</b> | Bath<br><b>2.5</b> |
|-----------------|--------------------|

View  
**Garden View**

|                           |                        |                             |
|---------------------------|------------------------|-----------------------------|
| Year Built<br><b>2028</b> | Sq.Ft.<br><b>1,962</b> | Pets Allowed:<br><b>Yes</b> |
|---------------------------|------------------------|-----------------------------|

## Additional Feature

|                  |                         |                        |
|------------------|-------------------------|------------------------|
| Den<br><b>No</b> | Floor Level<br><b>2</b> | Furnished<br><b>No</b> |
|------------------|-------------------------|------------------------|