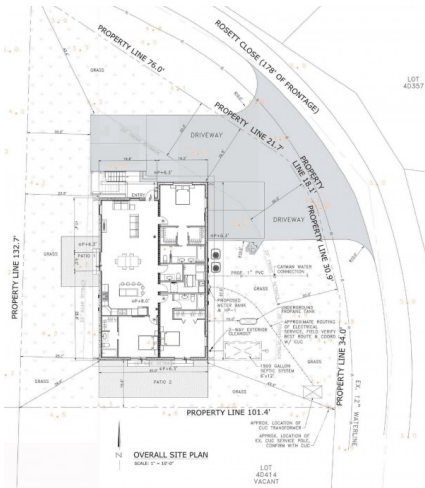


Rosett Close Duplex Both Floors

West Bay, Grand Cayman

MLS# 420835

CI\$1,600,000





DOUGLAS SELL
 345-946-7888
 doug@cip.realestate

BOTH FLOORS (Full Duplex Package) For the \$1,600,000.00
Headline: New ICF Duplex R 60 Hurricane Resilient Build 4,535 sq ft 6 Beds 8 Baths Turnkey Luxury
Description: A rare opportunity to own a full ICF constructed duplex engineered to withstand major hurricanes and deliver exceptional long term energy efficiency. This 4,535 sq ft property features 6 bedrooms, 6 full bathrooms, 2 half baths, and premium finishes throughout both units. Built with 6" ICF exterior walls (approx. R 60), Miami Dade impact windows, and a standing seam metal roof, this is one of the most resilient and efficient duplexes available in West Bay. Each unit includes a full KitchenAid appliance package, quartz countertops, custom wood cabinetry, walk in closets, and ensuite bathrooms for every bedroom. The upper unit features 14' cathedral ceilings, while the lower unit offers oversized patios with LPG BBQ connections. Perfect for investors seeking strong rental yields or owners wanting a high quality, low maintenance property. **Key Features:** 6" ICF exterior walls (approx. R 60 thermal value) Miami Dade impact windows Standing seam metal roof Full LPG system (cooktop, water heater, dryer, BBQ) Quartz countertops + custom cabinetry KitchenAid appliance package Ensuite bathrooms + walk in closets 14' cathedral ceilings (upper unit) Oversized patios (lower unit) High efficiency AC Fully landscaped + fenced Brick paver driveway Assigned parking (4 total) **LOCATION ADVANTAGES** Minutes to Esterley Tibbetts Highway Quick access to Seven Mile Beach corridor Close to schools, groceries, and restaurants Quiet residential street Strong long term tenant demand **Investment Highlights:** Long term rent per unit: CI\$3,500-4,500/mo Short term rent: CI\$250-350/night Projected yield: 6.5-8.5% Low maintenance due to ICF + metal roof + LPG

Essential Information

Type	Status	MLS#	Listing Type
Multi Unit	New	420835	Duplex

Key Details

Bed	Bath
6	7
View	
Garden View	
Year Built	Sq.Ft.
2026	4,535

Additional Feature

The information contained herein has been furnished by the owner and or their nominee and represented by them to be accurate. The listing company, agent and CIREBA MLS disclaims any liability or responsibility for any inaccuracies, errors or omissions in the represented information and all the information contained herein is subject to errors, omissions, price changes, prior sale or withdrawal, without notice and is at all times subject to verification by the purchaser.

Foundation
Slab

Zoning
**Medium Density
Residential**