



256 Crighton Building, Crewe Rd, PO BOX 1977,  
Grand Cayman, KY1-1104, Cayman Islands  
Phone: +1 (345) 949-7099  
Fax: +1 (345) 949-6819  
Email: info@cireba.com

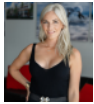
## Downtown Reach 801

George Town, Grand Cayman

MLS# 420876

**CI\$625,000**





**JESSICA MCNEIL**  
jessi@corcorancayman.com

This spacious 2 bed, 2.5 bathroom corner residence offers approximately 1,350 sq ft of comfortable living space and is ideal for first time home buyers, professionals, small families or anyone looking for a low-maintenance home close to everything. The open plan living area is bright and inviting, with plenty of natural light thanks to the desirable corner-unit position. The kitchen overlooks the living and dining space, making it perfect for both everyday living and entertaining. Upstairs, you'll find two generously sized bedrooms, each with its own ensuite bathroom, while a convenient guest powder room is located on the ground floor. Residents at Downtown Reach enjoy excellent amenities, including a swimming pool, fully equipped gym, and beautifully maintained grounds. The unit also benefits from two designated parking spaces, a valuable feature in this central location. Just minutes from Georgetown, Seven Mile Beach, grocery stores, schools, restaurants, and major offices, this home offers the perfect balance of convenience and comfort.

## Essential Information

Type	Status	MLS#	Listing Type
<b>Residential</b>	<b>New</b>	<b>420876</b>	<b>Condominiums</b>

## Key Details

Bed	Bath
<b>2</b>	<b>2.5</b>
View	
<b>Pool View</b>	
Year Built	Sq.Ft.
<b>2021</b>	<b>1,350</b>

## Additional Feature

Den	Furnished
<b>No</b>	<b>Yes</b>