



256 Crighton Building, Crewe Rd, PO BOX 1977,  
Grand Cayman, KY1-1104, Cayman Islands  
Phone: +1 (345) 949-7099  
Fax: +1 (345) 949-6819  
Email: info@cireba.com

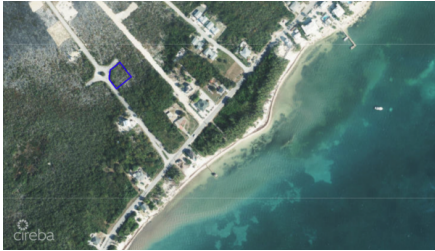
---

## Land East End

East End / High Rock, Grand Cayman

MLS# 420883

**CI\$162,000**





**ZARA WILLIAMS**

[zara@williams2realestate.com](mailto:zara@williams2realestate.com)

Some places stop you in your tracks. This is one of them. Set along a quiet, serene road in the heart of Grand Cayman's beloved East End, this 0.28-acre residential land parcel offers something increasingly rare, space, stillness, and a sense that life here could be exactly what you've always imagined. The Charm of East End East End is Grand Cayman at its most idyllic. This is where the island breathes. The pace softens, the colours deepen, and the community feels like the Cayman of another era, unhurried, genuine, and quietly extraordinary. It's the kind of place where children grow up knowing their neighbours by name, where family dinners stretch into the night and weekends feel genuinely restful. For those searching for land for sale in the Cayman Islands, East End represents one of the last opportunities to build in a truly special setting. Build the Home You Envision This parcel is perfectly sized to build the family home you've always had in mind, generous enough for a thoughtful design with outdoor living space, private enough to feel like your own retreat. Whether you envision a breezy Caribbean family residence or a legacy property to pass through generations, this Cayman Islands building lot is the canvas. Close to Cayman's Best-Known Destinations And just beyond your doorstep, adventure is never far. A short drive brings you to the legendary Rum Point, with its calm turquoise waters, swaying hammocks, and that unforgettable ocean view drive that never gets old. A Rare East End Opportunity For buyers seeking residential land in Grand Cayman's East End, opportunities like this are rare. This is land with intention, it doesn't shout. It simply invites you to imagine a morning coffee on the veranda, the kids in the yard, the weekend drive to Rum Point with the windows down. How do you want to live your life? This might be exactly where it begins.

## Essential Information

Type <b>Land</b>	Status <b>New</b>	MLS# <b>420883</b>	Listing Type <b>Low Density Residential</b>
---------------------	----------------------	-----------------------	--

## Key Details

Width <b>116</b>	Depth <b>117</b>
Acreage <b>0.2871</b>	View <b>Garden View</b>