



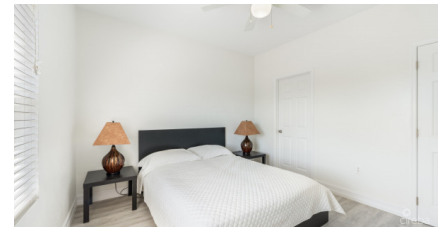
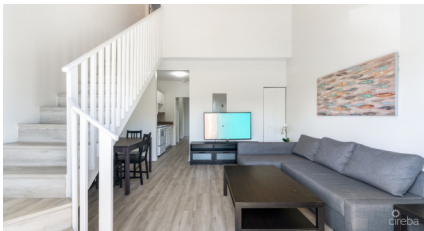
256 Crighton Building, Crewe Rd, PO BOX 1977,
Grand Cayman, KY1-1104, Cayman Islands
Phone: +1 (345) 949-7099
Fax: +1 (345) 949-6819
Email: info@cireba.com

#31 Executive Suites George Town - Investor Opportunity, 2 Bed Middle Unit

George Town, Grand Cayman

MLS# 420889

CI\$354,500





JAMES BOVELL
 345-945-4000
 james.bovell@remax.ky

Modern Living in the Heart of George Town Centrally located on Walkers Road, over 15 feet above sea level, discover Executive Suites. A gated community offering stylish, move-in-ready one and two bedroom residences. Whether you're a first-time buyer or an investor, these homes deliver the perfect blend of comfort, convenience, and value. With low strata fees and a prime location just minutes from downtown George Town, don't miss this opportunity. Step into a bright, open-plan living space with double-height ceilings and abundant natural light. Offering 2-bedrooms, 2-bathrooms and 831 square feet, it's no surprise these are popular rental properties offering strong returns. The modern galley kitchen flows seamlessly into the living and dining area, creating a welcoming space for everyday living or entertaining. The downstairs guest bedroom with ensuite and built-in closets gives this property great potential for couples or families. Leading upstairs to the primary bedroom which also boasts an ensuite and dual closets, these properties offer exceptional storage space. With contemporary furnishings and washer and dryer included, this turnkey property will provide long-term value. At Executive Suites, safety and security are a priority. Enjoy peace of mind with controlled access and a secure environment for you and your loved ones. With its central location, you're just minutes away from key amenities such as Smith Cove, George Town Hospital, and the new Hurley's Market. With strong rental demand and low vacancy rates, Executive Suites offers excellent potential for high yield returns and long-term value. Don't miss this rare opportunity to own a modern, secure, and well-located property at an unbeatable value. Get in touch now to schedule your tour. Please Note: Photos and videos are of a similar unit and are provided for reference only. All units share the same layout and design.

Essential Information

Type Residential	Status New	MLS# 420889	Listing Type Condominiums
----------------------------	----------------------	-----------------------	-------------------------------------

Key Details

Bed 2	Bath 2
-----------------	------------------

View
Inland

Year Built 2009	Sq.Ft. 831	Pets Allowed: Yes
---------------------------	----------------------	-----------------------------

Additional Feature

Den
No

Floor Level
2

Furnished
Yes