



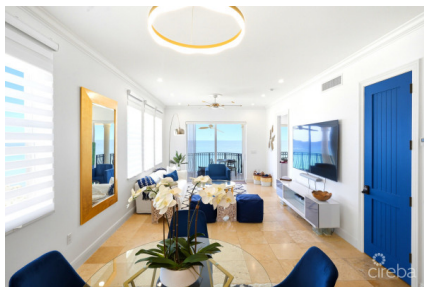
256 Crighton Building, Crewe Rd, PO BOX 1977,  
Grand Cayman, KY1-1104, Cayman Islands  
Phone: +1 (345) 949-7099  
Fax: +1 (345) 949-6819  
Email: info@cireba.com

## #205 Kisha Priceless Oceanfront Views, Under A Million

George Town, Grand Cayman

MLS# 420910

**CI\$969,000**





**CHRISTINA MOXAM**

christina.moxam@sothebysrealty.ky

Elevated Coastal Living Introducing Kisha 205 — an exceptionally rare second-floor corner residence perched along Grand Cayman's breathtaking South Church Street coastline, where uninterrupted sea views, refined contemporary interiors, and effortless waterfront living converge in perfect harmony. This beautifully renovated and fully furnished 2-bedroom, 2-bathroom residence represents one of the strongest values currently available for true oceanfront ownership in Grand Cayman. Positioned within an intimate boutique development, Kisha 205 captivates with light-filled interiors, an expansive open-concept layout, and panoramic Caribbean views from nearly every room. As a premium corner unit, the home enjoys exceptional privacy, abundant natural light, and a rare upper-floor perspective that transforms everyday living into a front-row seat to the sea. This is elevated island living — where panoramic ocean vistas, cooling sea breezes, and breathtaking sunsets become part of everyday life. Recently renovated and thoughtfully reimaged, the residence embodies a chic modern coastal aesthetic with refined finishes and a sophisticated yet relaxed ambiance throughout. Clean lines, elegant textures, soft neutral palettes, and curated accents create a home equally suited for full-time living, an island retreat, or investment property. The expansive main living area was designed to maximize natural light and seamless indoor-outdoor flow. The waterfront terrace offers the perfect setting for al fresco dining, sunset entertaining, or quiet moments overlooking the crystal-clear waters below. The kitchen features custom white cabinetry, quartz countertops, brand-new stainless steel Whirlpool appliances, elevated fixtures, and sophisticated gold accents. The primary suite serves as a tranquil retreat, complete with stunning views and a calming ambiance. The spa-inspired ensuite bathroom offers refined finishes and a serene design aesthetic, while the second bedroom is thoughtfully designed to accommodate family and guests in comfort and style. Throughout the home, modern upgrades and conveniences include upgraded lighting, contemporary fixtures, high-end furnishings, curated dcor, in-suite laundry, generous storage, two dedicated parking spaces and an exterior storage room. Residents of Kisha enjoy access to a secluded oceanfront lifestyle rarely found at this price point — including a seaside sun lounge, pool and soak tub, direct sea-ladder access, and some of Grand Cayman's most spectacular snorkeling and diving directly from the property. Set within an exclusive low-density complex of only 14 residences, Kisha offers a peaceful waterfront atmosphere just minutes from George Town, Smith Cove, world-class dining, diving, and island conveniences. This is more than a residence — it is an elevated Caribbean lifestyle experience, sophisticated, effortless, and deeply connected to the sea. A rare second-floor corner residence. Unobstructed panoramic ocean views. Designer turnkey interiors. True waterfront luxury under CI\$1M. This is the one buyers wait for.

## Essential Information

Type <b>Residential</b>	Status <b>New</b>	MLS# <b>420910</b>	Listing Type <b>Condominiums</b>
----------------------------	----------------------	-----------------------	-------------------------------------

## Key Details

Bed <b>2</b>	Bath <b>2</b>
-----------------	------------------

View  
**Ocean Front**

Year Built <b>2008</b>	Sq.Ft. <b>1,600</b>	Pets Allowed: <b>Yes</b>
---------------------------	------------------------	-----------------------------

## Additional Feature

Den <b>No</b>	Floor Level <b>2</b>	Furnished <b>Yes</b>
------------------	-------------------------	-------------------------