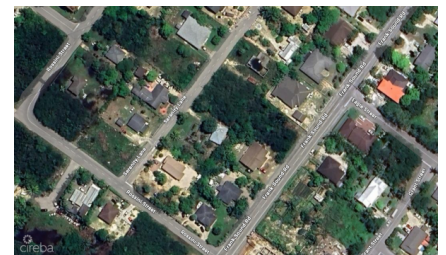


## North Side Development Lot With Partial Construction & Plans

Midland East, Grand Cayman

MLS# 420913

**CI\$299,000**





**JANET CHISHOLM**  
jchisholm@eracayman.com

This property features a cleared, levelled lot in a quiet residential neighbourhood, offering a prime foundation for a residential project. The land has fertile soil with mature fruit trees, ready for landscaping and gardening. Agent owned. Structure Details: The site includes a partially constructed two-story residence designed to reach 2,663 sq. ft. upon completion. Significant structural work has been finalised, including: Reinforced foundation Structural framing for both floors Staircase installation This property provides a substantial head start on development, with the primary structural components already in place.

## Essential Information

Type	Status	MLS#	Listing Type
<b>Land</b>	<b>New</b>	<b>420913</b>	<b>Low Density Residential</b>

## Key Details

Width	Depth
<b>102</b>	<b>102</b>
Acres	View
<b>0.2400</b>	<b>Garden View</b>