



256 Crighton Building, Crewe Rd, PO BOX 1977,
Grand Cayman, KY1-1104, Cayman Islands
Phone: +1 (345) 949-7099
Fax: +1 (345) 949-6819
Email: info@cireba.com

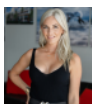
L'ambience Unit 48

South Sound, Grand Cayman

MLS# 420918

CI\$745,000





JESSICA MCNEIL
 jessi@corcorancayman.com

Rarely available and one of the largest residences within L'Ambience, this spacious 3-bedroom, 3-bathroom corner unit offers 2,020 sq ft of comfortable living space in a highly convenient central location. The open concept layout benefits from the added privacy that comes with being a corner unit. Generous living and dining areas flow seamlessly into the well-appointed kitchen, creating an ideal space for both everyday living and entertaining. All three bedrooms are generously sized, while an enclosed screened in area off on of the bedrooms provides a versatile bonus space to enjoy your morning coffee. Residents of L'Ambience enjoy a range of amenities, including a large swimming pool, gym, and welcoming common area perfect for relaxing or socialising. The community is conveniently located close to schools, shopping, restaurants, Georgetown and Seven Mile Beach. The property also includes two dedicated parking spaces, offering added convenience for owners and guests. Whether you're searching for a full-time residence, a family home, or an investment opportunity, this oversized corner unit offers exceptional value, generous square footage, and sought-after location within one of Grand Cayman's established communities.

Essential Information

Type Residential	Status New	MLS# 420918	Listing Type Condominiums
----------------------------	----------------------	-----------------------	-------------------------------------

Key Details

Bed 3	Bath 3
-----------------	------------------

View
Garden View

Year Built 2004	Sq.Ft. 2,020	Pets Allowed: Yes
---------------------------	------------------------	-----------------------------

Additional Feature

Den No	Floor Level 1	Furnished Partially
------------------	-------------------------	-------------------------------