



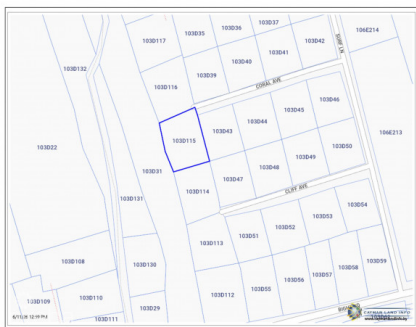
256 Crighton Building, Crewe Rd, PO BOX 1977,  
Grand Cayman, KY1-1104, Cayman Islands  
Phone: +1 (345) 949-7099  
Fax: +1 (345) 949-6819  
Email: info@cireba.com

## Cayman Brac Residential Lot In The Bight

Cayman Brac Centre, Cayman Brac

MLS# 420948

**CI\$39,000**





**GEORGE DAVIDSON**  
345 623-9999  
george@williams2realestate.com

Affordable Land Opportunity in The Bight, Cayman Brac. The lot next door is also available. Located on the peaceful north side of Cayman Brac in The Bight, this Cayman Brac inland land for sale offers an accessible entry point into island property ownership. Spanning approximately 0.20 acres, this parcel is ideal for those looking to build a private island home while staying connected to the natural beauty that defines this area. Tucked just a short distance from the coastline, the property benefits from proximity to the sea without the premium often associated with direct oceanfront land. A Smart Footprint with Added Comfort At approximately 0.20 acres, this lot offers a manageable and versatile footprint, well-suited for a thoughtfully designed residence or a low-maintenance island retreat. With existing homes on either side, you'll enjoy the added benefit of an established setting, offering a sense of community and ease when planning your build. Whether you're envisioning a full-time residence or a seasonal escape, the balance of privacy and neighboring homes creates a welcoming and practical environment. Nature, Simplicity, and Island Living The Bight is known for its quiet atmosphere and strong connection to nature. Residents enjoy access to hiking trails, nature watching, and the nearby Cayman Brac Parrot Reserve, making this an ideal setting for those who appreciate outdoor living and a slower, more intentional pace. This area captures the essence of Cayman Brac, unspoiled landscapes, open skies, and a close-knit community, while still offering convenient access to the island's key amenities. Value in a Growing Market As interest in Cayman Brac continues to grow, smaller parcels like this Cayman Brac inland land for sale are becoming increasingly desirable. The combination of location, accessibility, and proximity to oceanfront property enhances both its lifestyle appeal and long-term value. Whether you're entering the market for the first time or expanding your portfolio, this property offers flexibility and opportunity, especially with a larger oceanfront parcel also available nearby. Explore the Possibilities Drive by and experience the setting for yourself, or inquire for more details about this inland parcel and the nearby oceanfront acreage also available. How do you want to live your life?

## Essential Information

Type	Status	MLS#	Listing Type
<b>Land</b>	<b>New</b>	<b>420948</b>	<b>Low Density Residential</b>

## Key Details

Width  
**140**

Depth  
**125**

Acreage  
**0.2400**

View  
**Garden View**