



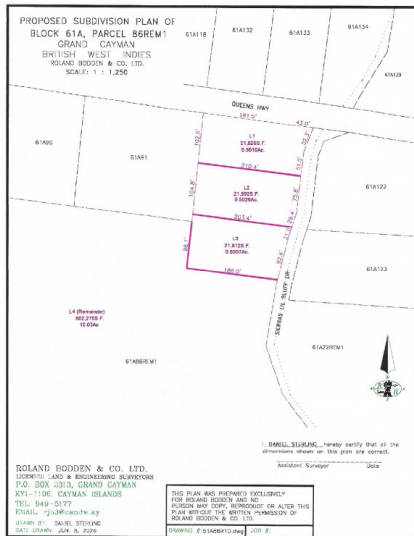
256 Crighton Building, Crewe Rd, PO BOX 1977,
 Grand Cayman, KY1-1104, Cayman Islands
 Phone: +1 (345) 949-7099
 Fax: +1 (345) 949-6819
 Email: info@cireba.com

0.5010 Acres Build Your Dream Home In East End

North East Coast / Colliers, Grand Cayman

MLS# 420964

CI\$155,000



QUATRO HATCH

quatro@1503propertygroup.com

JILL DAVISON

jill@1503propertygroup.com

Set directly across the road from the ocean, this 0.5010-acre parcel presents an excellent opportunity to build a custom home in one of Grand Cayman's most peaceful communities. The property sits approximately 20 feet above sea level, offering naturally well-drained land and an attractive setting for future development, subject to planning approval. East End is known for its quiet surroundings, beautiful coastline, and laid-back atmosphere, while still being within easy reach of restaurants, beaches, diving, and everyday conveniences. Whether you're looking to build your island home or secure land for the future, this generously sized parcel offers flexibility and long-term potential in a location that continues to attract buyers seeking space and privacy. Adjacent half-acre parcels are also available, providing the opportunity to purchase additional land if desired.

Essential Information

Type Land	Status New	MLS# 420964	Listing Type Agriculture
---------------------	----------------------	-----------------------	------------------------------------

Key Details

Width 225	Depth 103
Acreage 0.5010	View Inland, Ocean View

Additional Feature

Covenants
No