



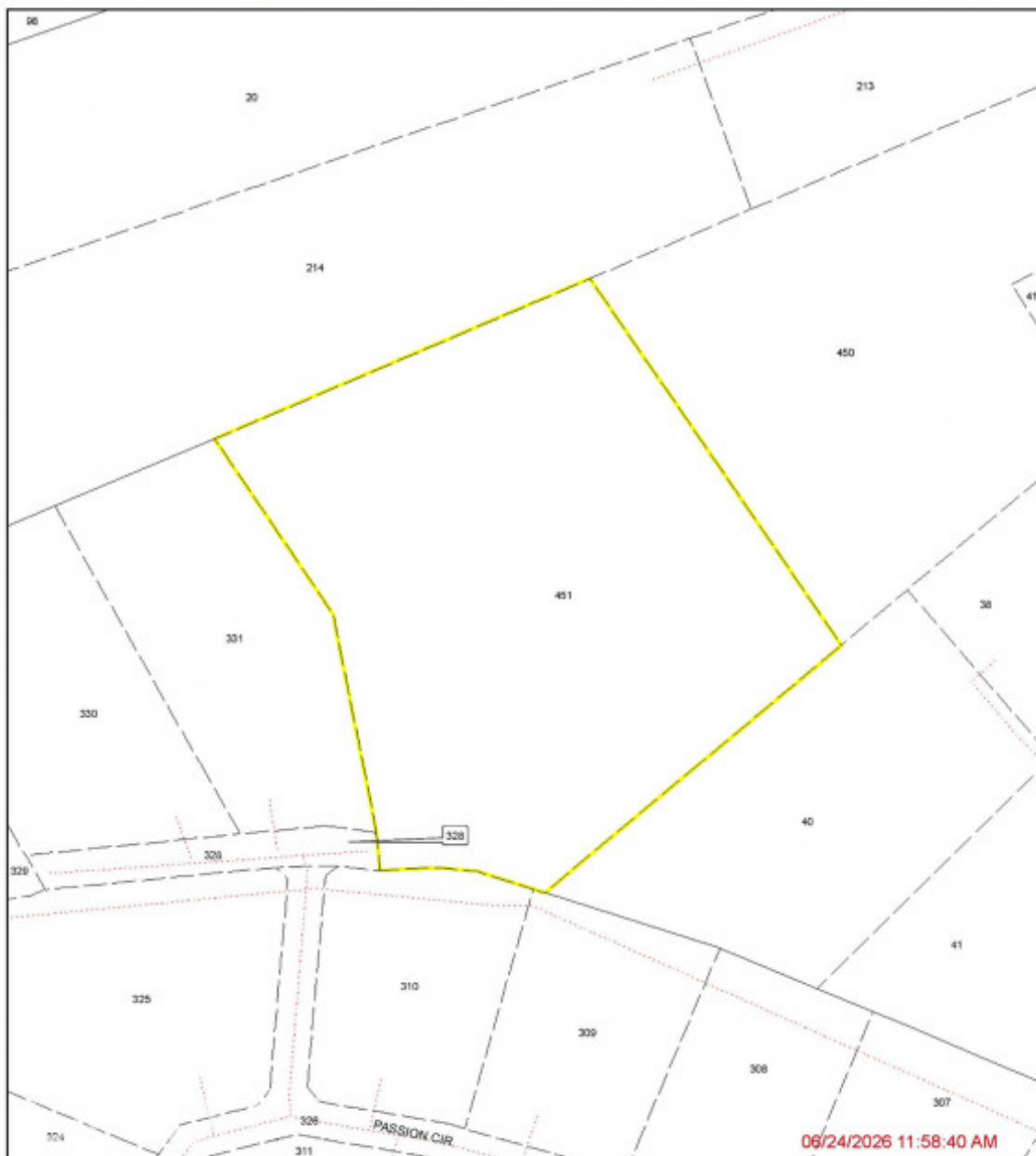
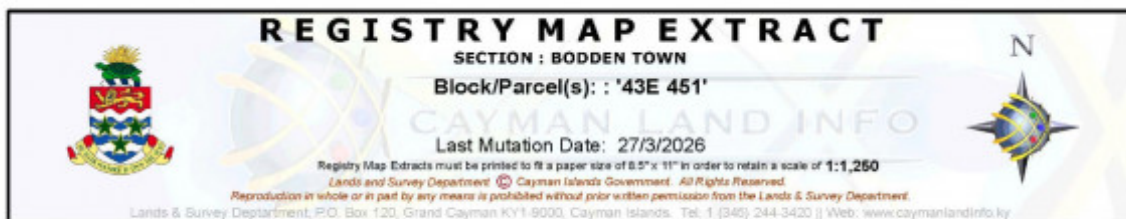
256 Crighton Building, Crewe Rd, PO BOX 1977,
Grand Cayman, KY1-1104, Cayman Islands
Phone: +1 (345) 949-7099
Fax: +1 (345) 949-6819
Email: info@cireba.com

3.235-acre Development Parcel With Operational Farm

Bodden Town / Breakers, Grand Cayman

MLS# 420980

CI\$1,575,000



The information contained herein has been furnished by the owner and or their nominee and represented by them to be accurate. The listing company, agent and CIREBA MLS disclaims any liability or responsibility for any inaccuracies, errors or omissions in the represented information and all the information contained herein is subject to errors, omissions, price changes, prior sale or withdrawal, without notice and is at all times subject to verification by the purchaser.



BIANCA ALBERGA
345-525-4001
bianca.alberga@kellerwilliams.ky

Excellent opportunity for residential or agricultural development, with the added benefit of a fully operational, income-generating egg farm already in place. Zoned Agriculture/Residential, the property offers flexibility for a buyer looking to subdivide, build out, or hold for future development. The land is partially treed and includes registered road access. Well-positioned to benefit from the planned East-West Arterial expansion (Phases 2 & 3), which will significantly improve connectivity to George Town and the wider island. A rare opportunity to secure a significant parcel in a rapidly evolving corridor with a fully operational farm as an added advantage.

Essential Information

Type	Status	MLS#	Listing Type
Land	New	420980	Low Density Residential

Key Details

Width	Depth
397	350
Acreage	View
3.2350	None