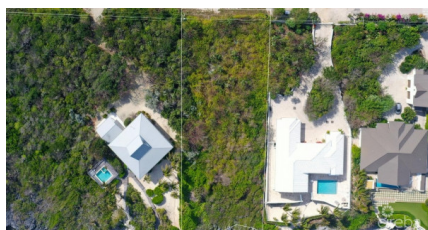
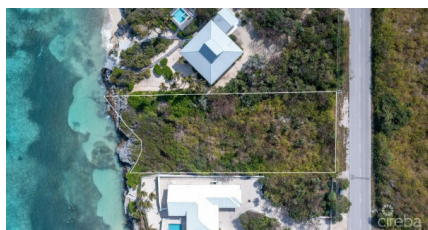
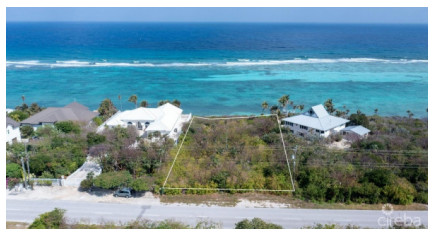


## Queen's Highway, Waterfront Parcel 0.62 Acre

North East Coast / Colliers, Grand Cayman

MLS# 419014

**US\$915,000**





**JAMES BOVELL**  
345-945-4000  
james.bovell@remax.ky

Build Your Dream Home on This Exceptional Parcel of Land This stunning piece of property offers the perfect canvas for your dream home. Elevated at 27 feet and gently sloping down to 13 feet closer to the water, this solid site requires no pilings or major substructure work, keeping construction costs lower. Positioned between two beautiful, existing homes, it provides both privacy and a welcoming sense of community. With excellent road frontage and good depth, the property ensures a quiet, peaceful setting while still offering easy access. The sun sets behind the land, casting the perfect light to showcase the vibrant, ever-changing watercolors. Breathtaking, expansive views and refreshing tropical breezes complete the picture, making every day feel like a vacation. Whether you’re envisioning a cozy retreat or an expansive family estate, the possibilities are endless. The tranquil surroundings and prime location make this a truly special opportunity. With its unique topography, spectacular views, and proximity to the water, this is an offering you don’t want to miss. Build your dream home here and enjoy all the natural beauty this incredible land has to offer. Reach out now!

Essential Information

Type	Status	MLS#	Listing Type
Land	Current	419014	Low Density Residential

Key Details

Width	Depth
107	301
Acreage	View
0.62	Water Front, Water View